



Bridge Lane, NW11

£500,000

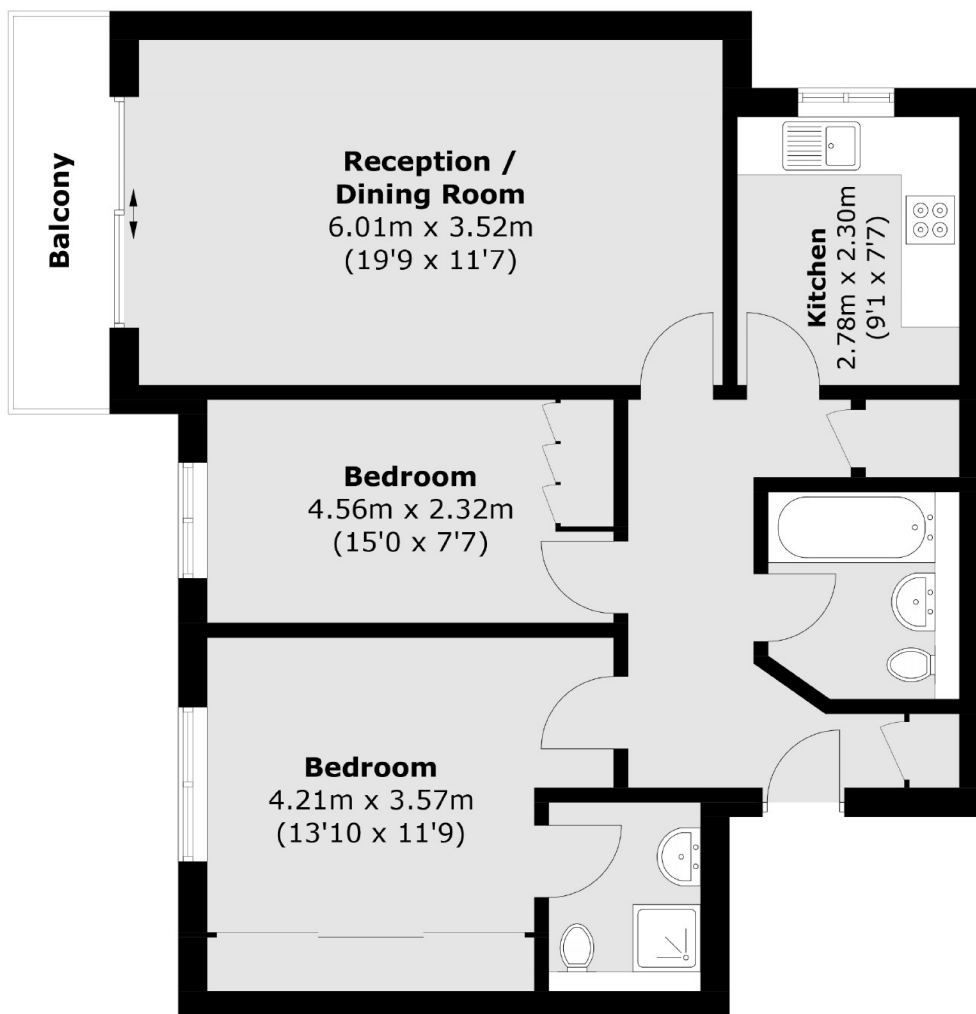
A spacious two double bedroom apartment located in a purpose-built block with lift. This delightful property benefits from two bathrooms, private parking, balcony, long lease and is being offered chain free.

Located on Bridge Lane in Golders Green, the property is within close proximity of Brent Cross shopping centre, the A406, M1 and A41.

Features

- Purpose-Built Apartment
- Two Bedrooms
- Two Bathrooms
- Parking
- Long Lease
- Chain Free

Bridge Lane, London, NW11



Third Floor

Total area (approx.): 72.3 sq. m (778.2 sq. ft)
Balcony: 4.1 sq. m (44.1 sq. ft)