



## High Mount, NW4

£375,000

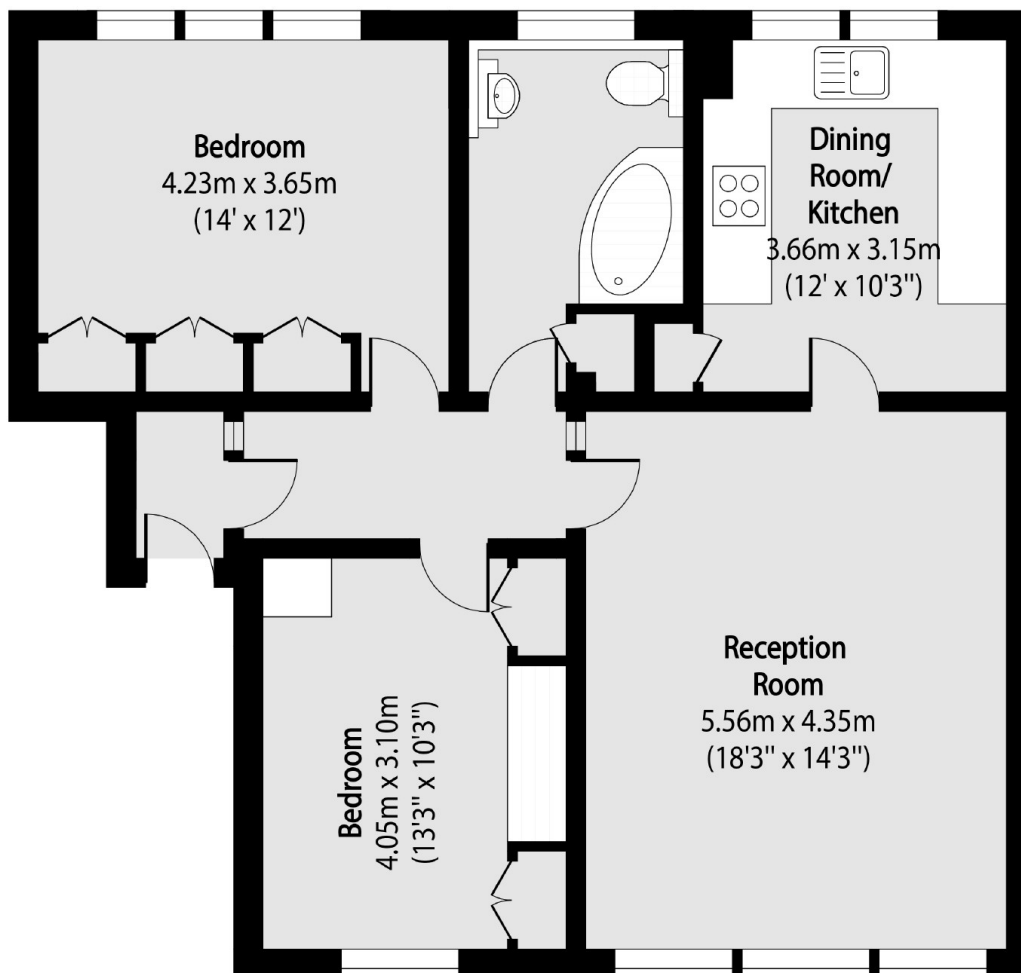
Well proportioned and well presented two double bedroom, top (4th) floor apartment in this popular portered block in Hendon Central. The flat offers fabulous far reaching views and benefits from two allocated parking spaces.

High Mount is ideally located on Station Road, moments from Hendon Thameslink and a short walk from Hendon Central Underground Station. Brent Cross shopping centre and Middlesex University are also nearby.

### Features

- Two Bedrooms
- Two Parking Spaces
- Share of Freehold
- Close to Hendon Stations
- Purpose-Built Block with Lift
- Porter

# High Mount, Hendon, NW4



Total area (approx): 81.17 sq m (873 sq. ft)