



Moorhen Drive, NW9

£450,000

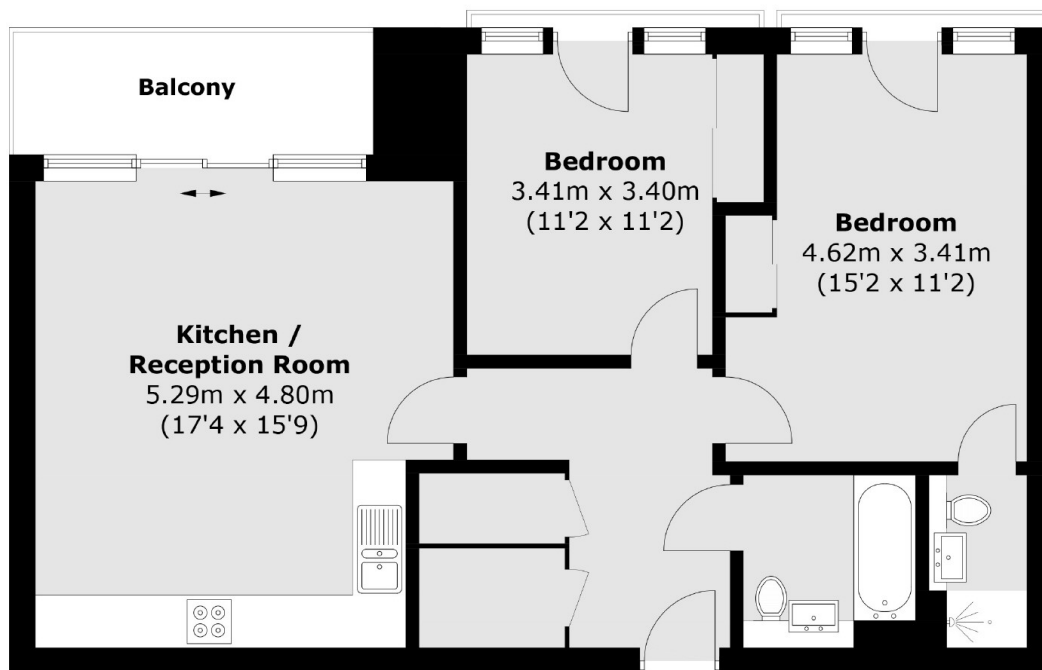
A delightful and bright two double bedroom flat located within this handsome modern home. This stunning flat comes with two bathrooms, a private parking space and a private balcony looking over the lake.

This excellent modern development overlooks the Welsh Harp Nature Reserve and Reservoir, and is conveniently located close to Brent Cross Shopping Centre and Hendon Thameslink station.

Features

- Two Double Bedrooms
- High Floor With Amazing Views
- Two Bathrooms
- Private Parking Space
- Private Balcony
- Fantastic Condition

Moorhen Drive,
London, NW9



Thirteenth Floor

Total area (approx.): 69.1 sq. m (743.7 sq. ft)
Balcony : 5.7 sq. m (61.4 sq. ft)

Dexters

Hendon
18 Central Circus
London
NW4 3AS
Sales
020 8545 8586

Energy Rating: B. We aim to make our particulars both accurate and reliable. However they are not guaranteed; nor do they form part of an offer or contract. If you require clarification on any points then please contact us, especially if you're traveling some distance to view. Please note that appliances and heating systems have not been tested and therefore no warranties can be given as to their good working order.

 **RICS** | Regulated
Estate Agent
and Letting Agent

[dexters.co.uk](https://www.dexters.co.uk)