



Neeld Crescent, NW4

£500,000

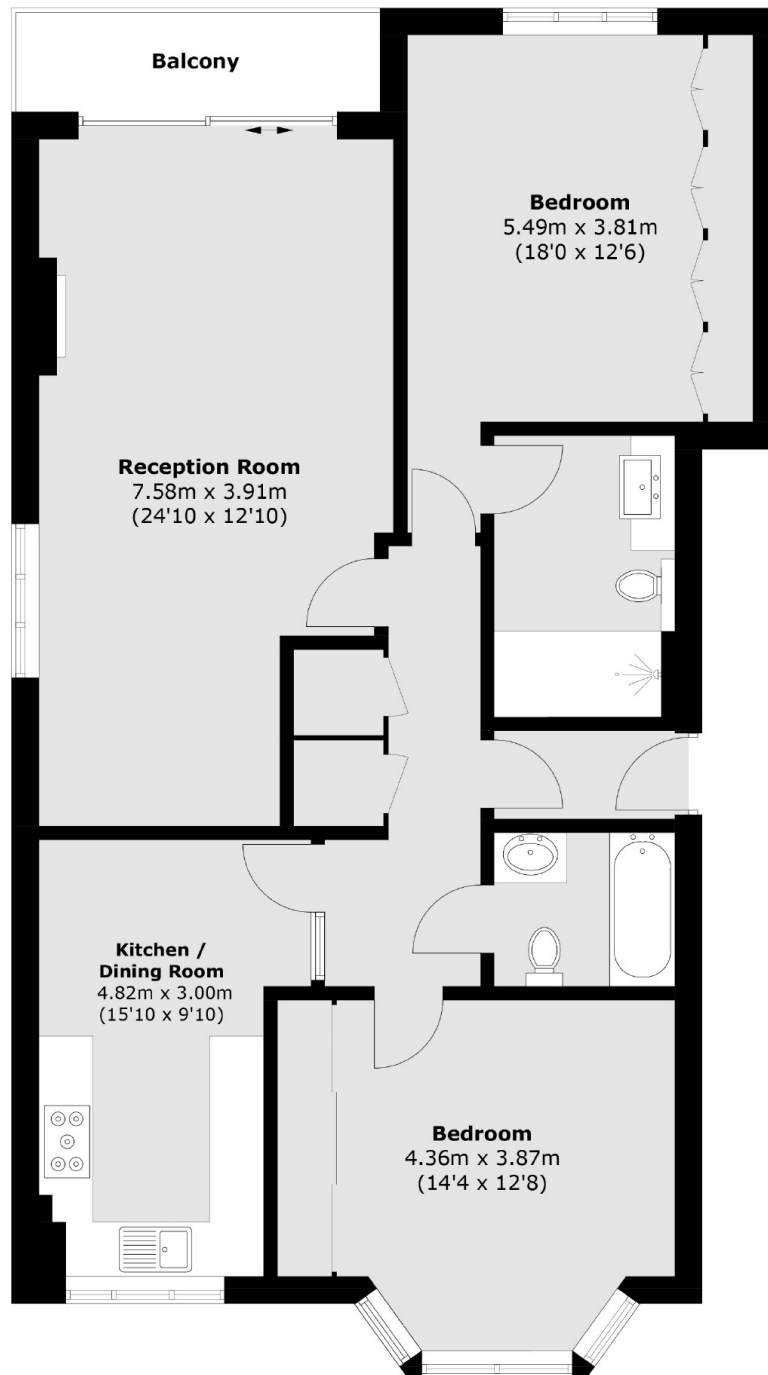
A very spacious two double first floor flat located within this handsome purpose-built block. This chain free flat comes with a private parking space, a private balcony, two bathrooms and a large separate reception room.

Neeld Crescent is a popular leafy family street and is nearby Hendon Central's multiple shops, cafés, restaurants and parks. Hendon Central tube station (Northern Line) is also very close proximity.

Features

- Two Double Bedrooms
- Two Bathrooms
- First Floor
- Private Parking Space
- Private Balcony
- Chain Free

Neeld Crescent, Hendon, NW4



Total area (approx.): 97.4 sq. m (1,048.4 sq. ft)
Balcony: 4.4 sq. m (47.4 sq. ft)

Dexters

Hendon
18 Central Circus
London
NW4 3AS
Sales
020 8545 8586

Energy Rating: C. We aim to make our particulars both accurate and reliable. However they are not guaranteed; nor do they form part of an offer or contract. If you require clarification on any points then please contact us, especially if you're traveling some distance to view. Please note that appliances and heating systems have not been tested and therefore no warranties can be given as to their good working order.

 **RICS** | Regulated
Estate Agent
and Letting Agent

[dexters.co.uk](https://www.dexters.co.uk)