



## Boulevard Drive, NW9

### £450,000

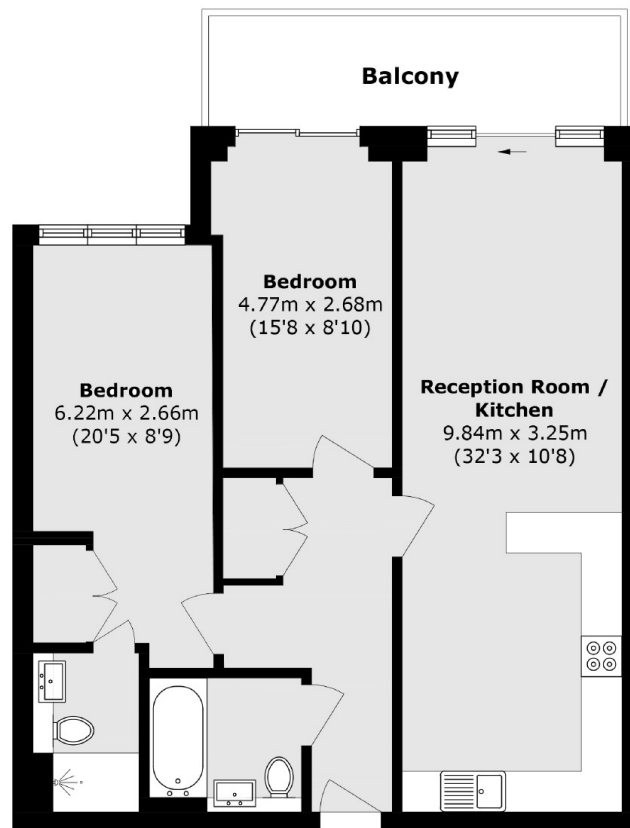
An excellent and spacious two double bedroom presented in immaculate condition. This chain free flat comes with two bathrooms, a large private balcony the width of the flat and a private parking space.

Boulevard Drive is located in the prestigious Beaufort Park. Residents benefit from the on-site gym and spa. Situated within easy access of Colindale underground station.

### Features

- Two Double Bedrooms
- Two Bathrooms (One en suite)
- Private Parking Space
- Chain Free
- Gym & Spa
- Private Balcony

Boulevard Drive,  
London, NW9



Total area (approx.): 81.8 sq. m (880.4 sq. ft)  
Balcony area (approx.): 9.9 sq. m (106.5 sq. ft)

**Dexters**

Hendon  
18 Central Circus  
London  
NW4 3AS  
Sales  
020 8545 8586

Energy Rating: D. We aim to make our particulars both accurate and reliable. However they are not guaranteed; nor do they form part of an offer or contract. If you require clarification on any points then please contact us, especially if you're traveling some distance to view. Please note that appliances and heating systems have not been tested and therefore no warranties can be given as to their good working order.

 **RICS** | Regulated  
Estate Agent  
and Letting Agent

[dexters.co.uk](https://www.dexters.co.uk)