



Tithe Court, NW4

£325,000

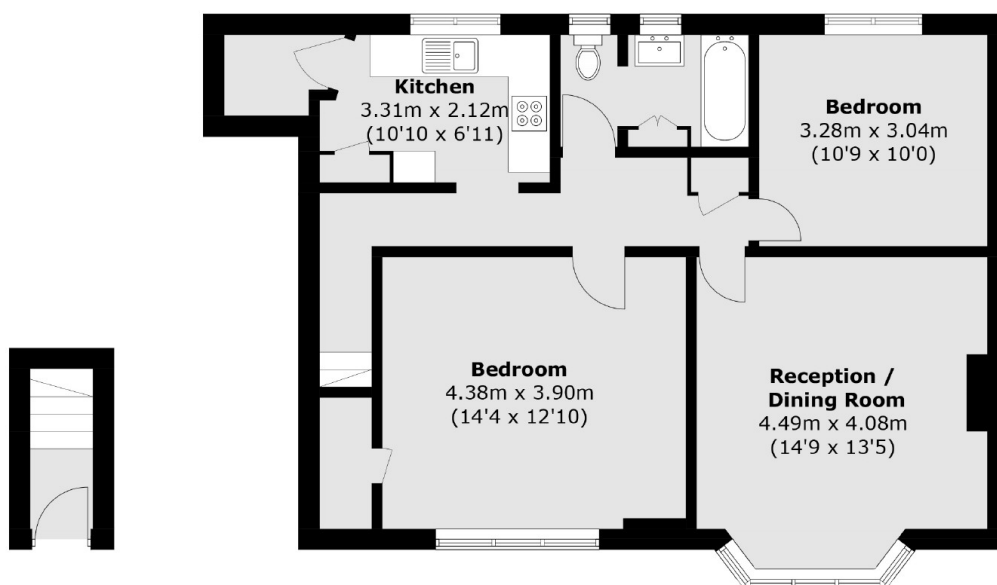
A two double bedroom first floor maisonette located on Hall Lane in Hendon. This lovely home comes with a private entrance, a separate kitchen, and a private garden.

Hall Lane is located close to the exclusive Laboratory Health Club and Spa, the green open space of Sunny Hill Park and is accessible to Colindale and Hendon Central underground station (Northern line).

Features

- Two Double Bedrooms
- Private Garden
- Private Entrance
- Separate Kitchen
- First Floor
- Maisonette

Tithe Court, London, NW4



Total area (approx.): 73.1 sq. m (786.9 sq. ft)

Dexters

Hendon
18 Central Circus
London
NW4 3AS
Sales
020 8545 8586

Energy Rating: D. We aim to make our particulars both accurate and reliable. However they are not guaranteed; nor do they form part of an offer or contract. If you require clarification on any points then please contact us, especially if you're traveling some distance to view. Please note that appliances and heating systems have not been tested and therefore no warranties can be given as to their good working order.

 **RICS** | Regulated
Estate Agent
and Letting Agent

[dexters.co.uk](https://www.dexters.co.uk)