



Beaufort Square, NW9

£475,000

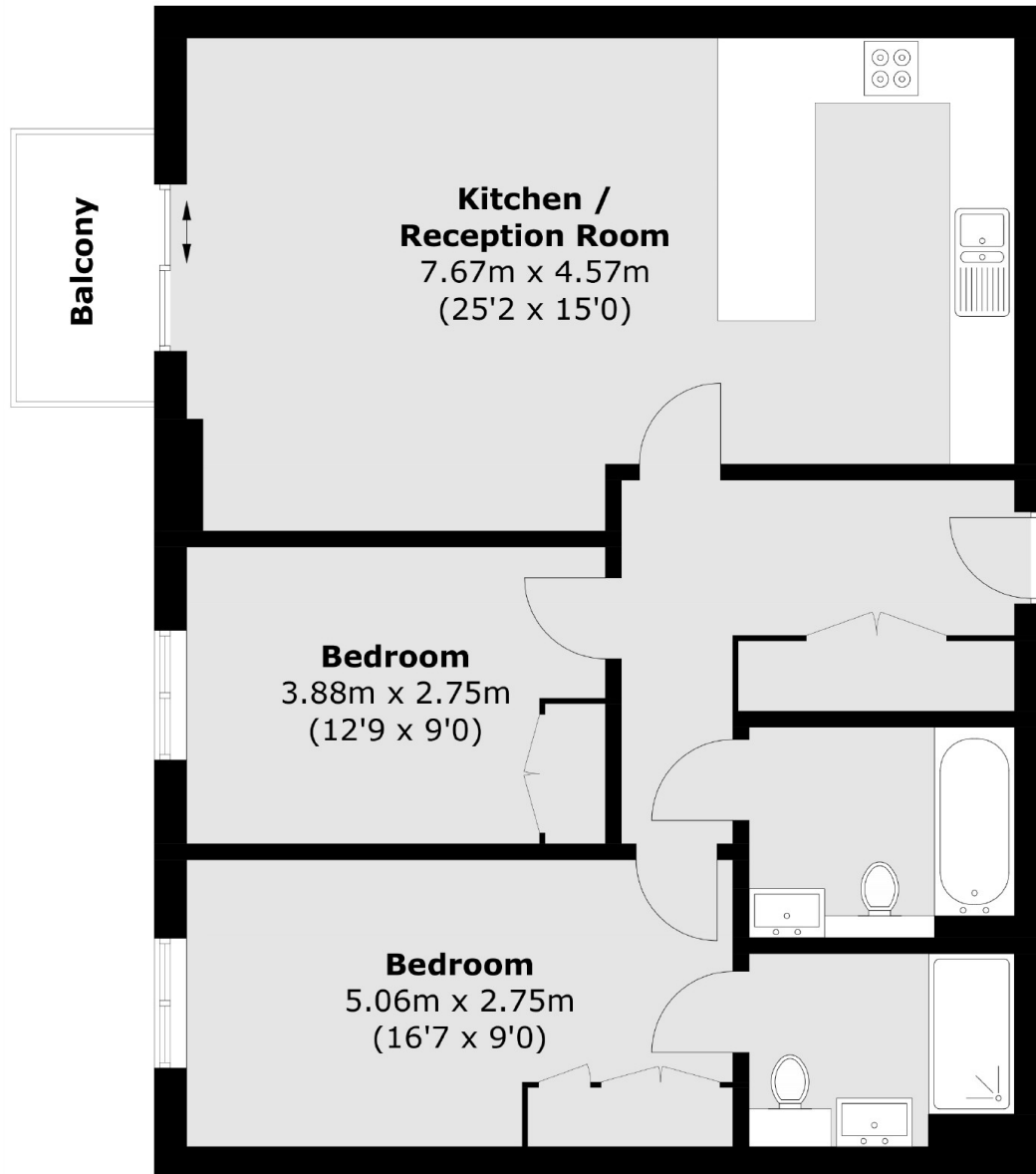
A stunning two double bedroom apartment set within the prestigious Beaufort Park development. This property benefits from two bathrooms, gated parking, a private balcony and is chain free.

Situated in the heart of Colindale and just moments from Colindale tube station (Northern Line) as well as numerous eateries, shops and other local amenities. Gym facilities and other transport links are also close by.

Features

- Modern Block With Lift
- Two Bedrooms
- Two Bathrooms
- Balcony
- Secure Parking
- Gym & Spa Access

Beaufort Square, London, NW9



Total area (approx.): 79.2 sq. m (852.5 sq. ft)
Balcony: 3.2 sq. m (34.4 sq. ft)

Dexters

Hendon
18 Central Circus
London
NW4 3AS
Sales
020 8545 8586

Energy Rating: . We aim to make our particulars both accurate and reliable. However they are not guaranteed; nor do they form part of an offer or contract. If you require clarification on any points then please contact us, especially if you're traveling some distance to view. Please note that appliances and heating systems have not been tested and therefore no warranties can be given as to their good working order.

 **RICS** | Regulated
Estate Agent
and Letting Agent

[dexters.co.uk](https://www.dexters.co.uk)