



Audax, NW9

£645,000

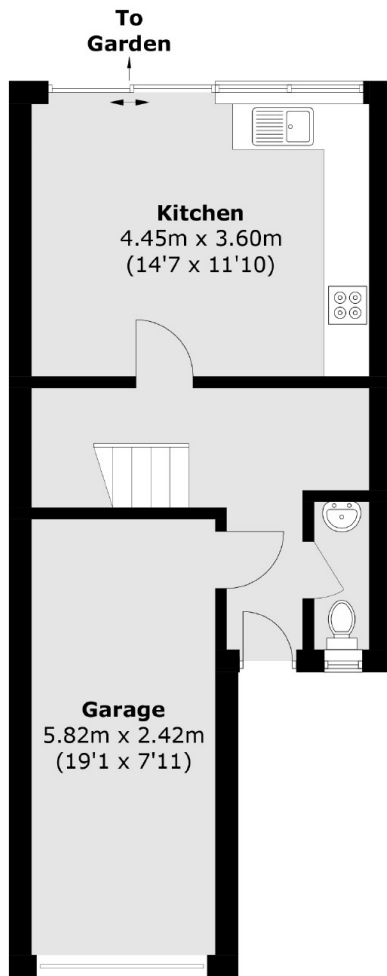
A well presented four bedroom terraced house, located on a quiet road in Colindale. This excellent freehold property benefits from proximity to transport links, a private garden and has a private driveway.

Lower Strand is a quiet and popular road for families close to local amenities such as Colindale underground station, Grahame Park, Schools, Gyms, Cafes and Restaurants.

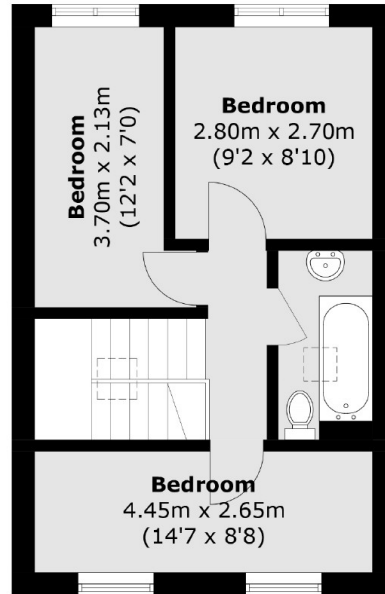
Features

- Freehold Property
- Chain Free
- Excellent Transport Links
- Four Bedroom Terraced
- Private Garden
- Garage

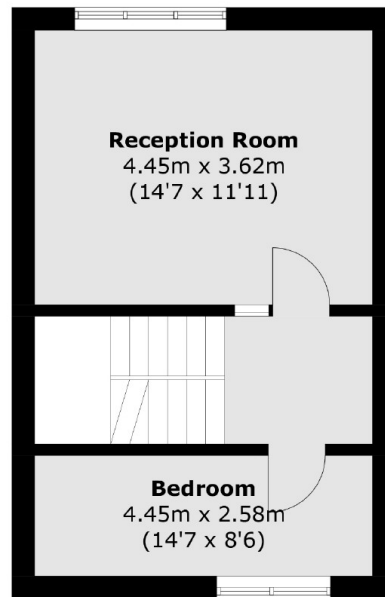
Audax, London, NW9



Ground Floor



Second Floor



First Floor

Total area (approx.): 106.2 sq. m (1,143.0 sq. ft)
(Including Garage)