



Commander Avenue, NW9

£425,000

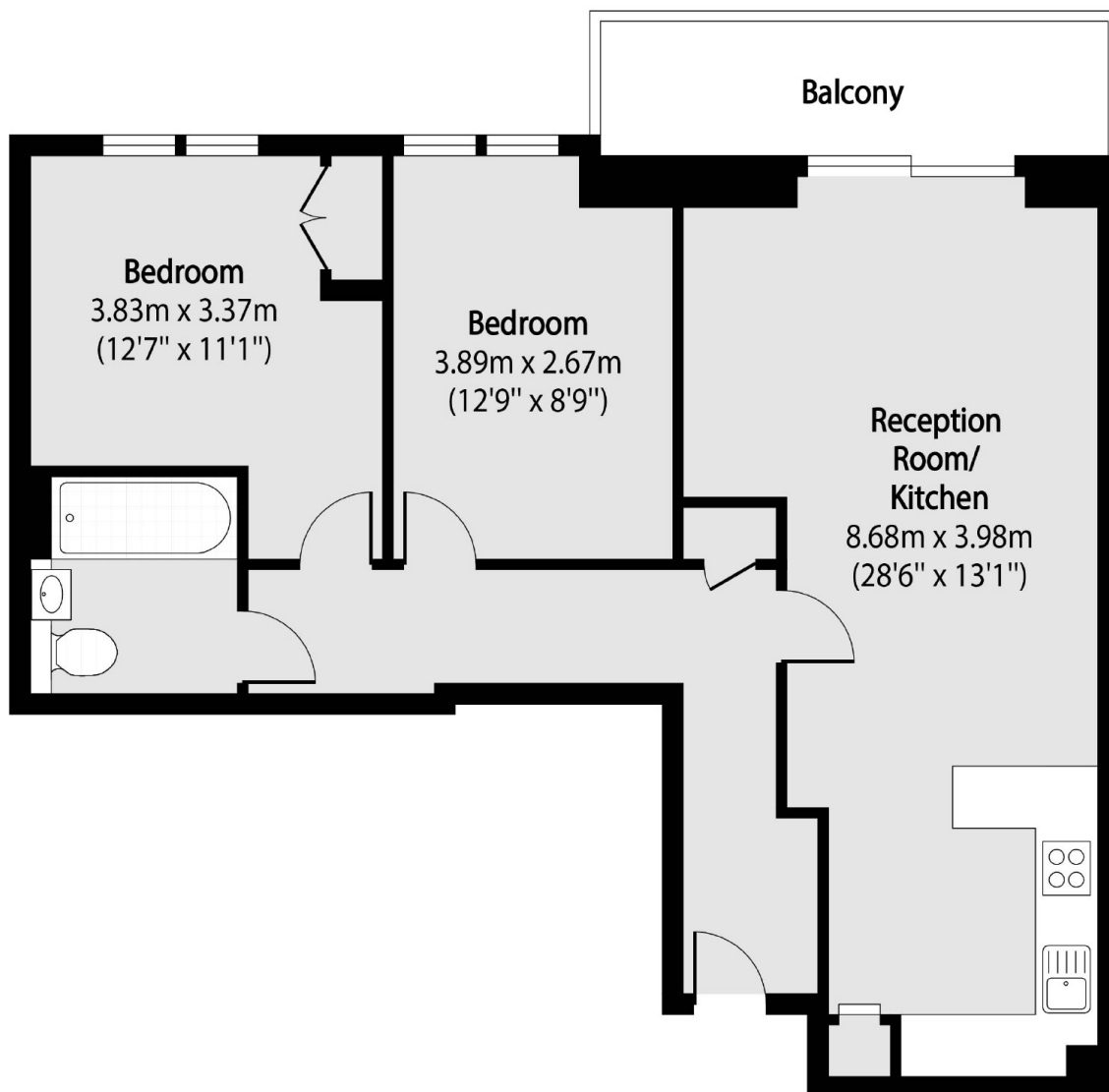
An excellent two double bedroom flat set within this prestigious Beaufort Park development. This charming home has a spacious kitchen/reception area, a private balcony, communal grounds and comes with no chain.

Situated in the heart of Colindale and just moments from Colindale Tube Station (Northern Line) as well as numerous eateries, shops and other local amenities. Gym facilities and other transport links are also close by.

Features

- Two Double Bedrooms
- Private Balcony
- Fantastic Condition
- No Chain
- Large Reception Room
- Communal Grounds

Commander Avenue, London, NW9



Total area (approx): 65.73 sq m (708 sq. ft)

Balcony total area (approx): 6.37 sq m (69 sq. ft)