



St. Marys Crescent, NW4

£800,000

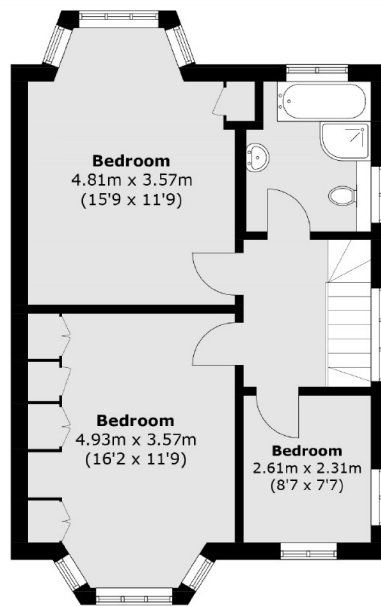
A fantastic link-detached family home located on one of Hendon's popular leafy streets. This excellent four bedroom home has a double reception room, a large driveway, a spacious private garden and three bathrooms.

St. Marys Crescent is a highly desirable location in Hendon and is located in a quiet tree lined street, close to Sunny Hill Park and Middlesex University.

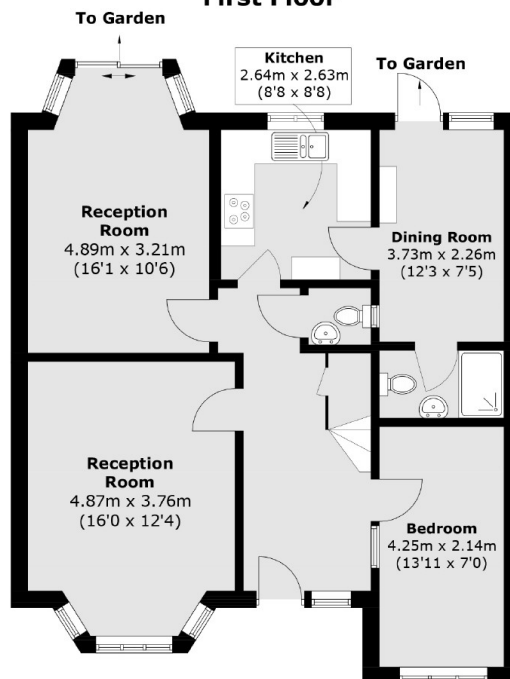
Features

- Link-Detached House
- Four Bedrooms
- Large Driveway
- Big Potential to Extend
- Large Garden
- Three Bathrooms

St. Marys Crescent, London, NW4



First Floor



Ground Floor

Total area (approx.): 128.2 sq. m (1,379.9 sq. ft)