

## St. Marys Crescent, NW4

£850,000

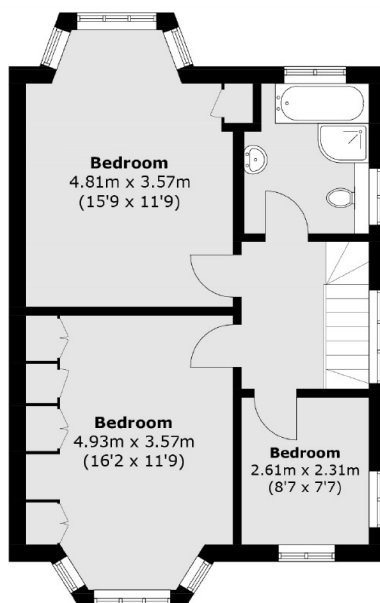
A fantastic link-detached family home located on one of Hendon's popular leafy streets. This excellent four bedroom home has a double reception room, large driveway, spacious private garden and three bathrooms.

St. Mary's Crescent is a highly desirable location in Hendon and is located in a quiet tree lined street, close to Sunny Hill Park and Middlesex University.

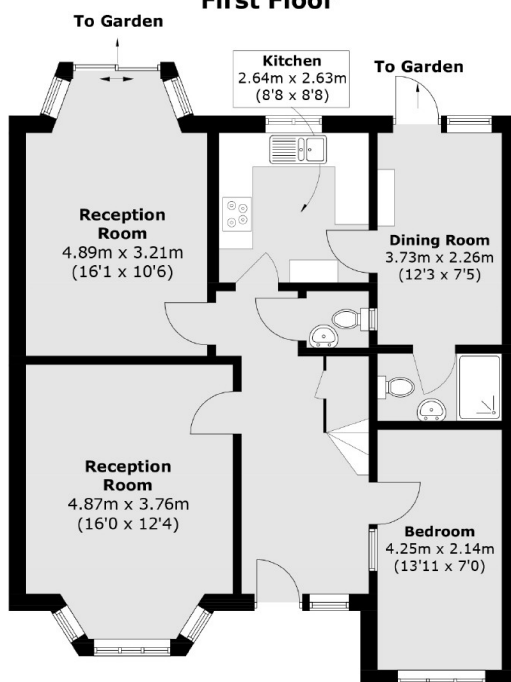
### Features

- Link-Detached House
- Four Bedrooms
- Large Driveway
- Big Potential to Extend
- Large Garden
- Three Bathrooms

# St. Marys Crescent, London, NW4



## First Floor



## Ground Floor

Total area (approx.): 128.2 sq. m (1,379.9 sq. ft)

# Dexters

Hendon  
18 Central Circus  
London  
NW4 3AS  
Sales  
020 8545 8586

Energy Rating: E. We aim to make our particulars both accurate and reliable. However they are not guaranteed; nor do they form part of an offer or contract. If you require clarification on any points then please contact us, especially if you're traveling some distance to view. Please note that appliances and heating systems have not been tested and therefore no warranties can be given as to their good working order.

 **RICS** | Regulated  
Estate Agent  
and Letting Agent

[dexters.co.uk](http://dexters.co.uk)