



Greyhound Hill, NW4

£900,000

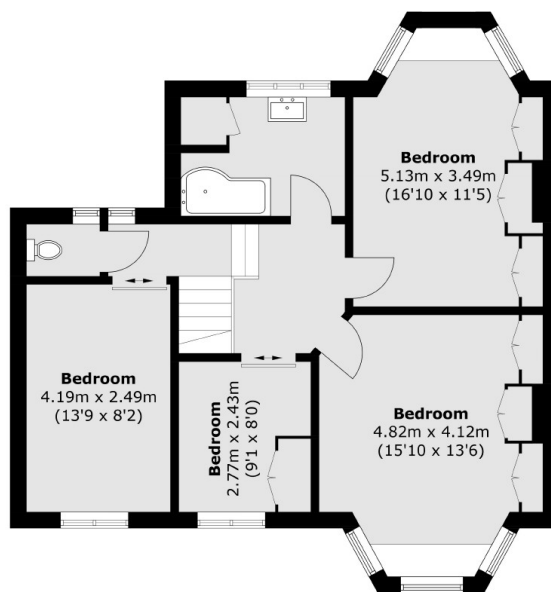
An excellent detached family home located on one of Hendon's popular roads. This house is perfect to add value and extend, with four bedrooms, a private driveway, large garden and is offered chain free.

Located close to Middlesex University, Sunny Hill Park, Brent Street's shopping and transport facilities, and within access of Hendon Central Underground Station,

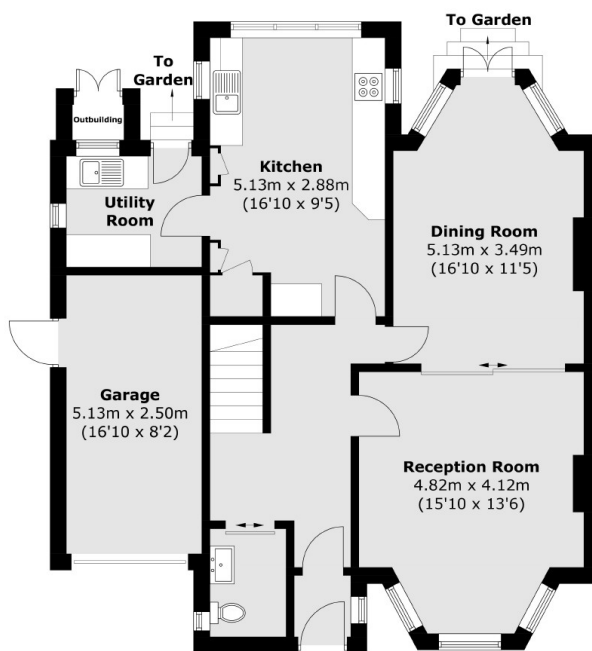
Features

- Detached
- Private Driveway
- Large Garden
- Huge Potential
- Four Bedrooms
- Large Garden

Greyhound Hill, London, NW4



First Floor



Ground Floor

Total area (approx.): 144.6 sq. m (1,556.4 sq. ft)
(Excluding Outbuilding)

Garage: 12.9 sq. m (138.8 sq. ft)