



The Ridgeway, NW9

£475,000

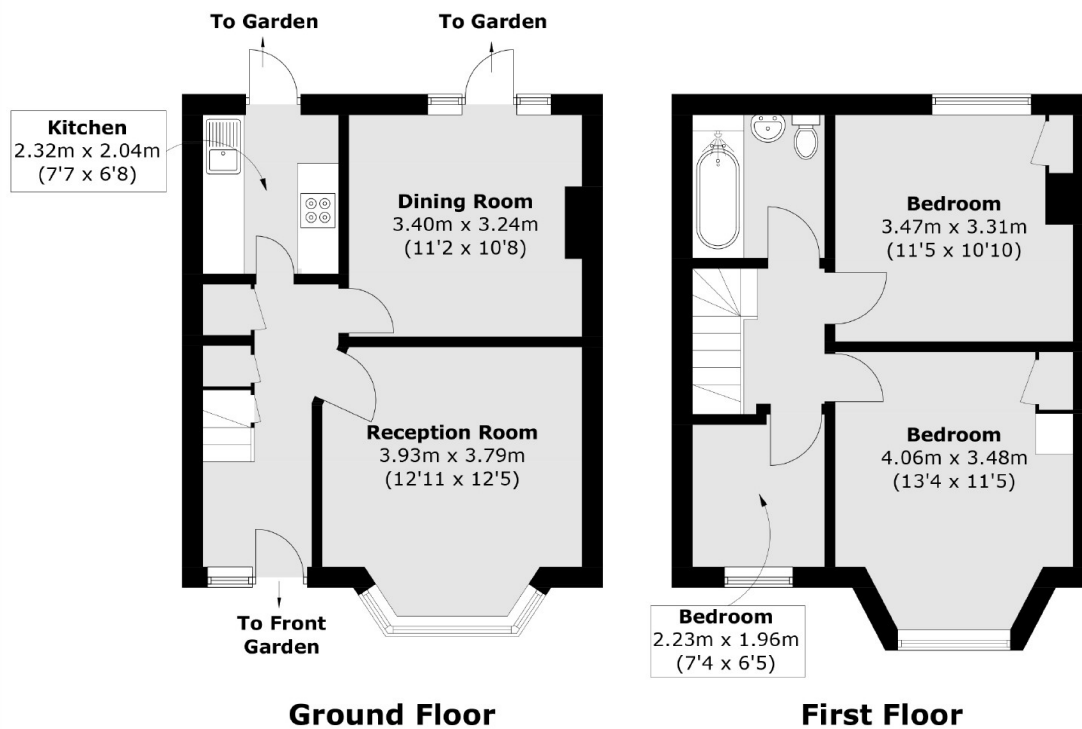
An attractively priced three bedroom house, in need of refurbishment. This family home benefits from potential to extend, two reception rooms and is being offered chain free.

The Ridgeway is a quiet residential road, situated in Colindale on the borders of Kingsbury, Colindale and Hendon. Within easy access of a large variety of shopping and transport facilities.

Features

- Freehold House
- Three Bedrooms
- Two Reception Rooms
- Potential To Extend
- Close to Amenities
- Chain Free

The Ridgeway, London, NW9



Total area (approx.): 76.9 sq. m (827.7 sq. ft)