



Watford Way, NW4

£600,000

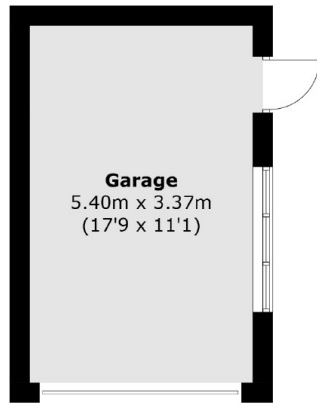
An excellent four bedroom semi-detached family home on Watford Way. This house comes with a large double reception, two bathrooms, garage, garden, driveway and is offered chain free.

This family home on Watford Way is located within easy access of Hendon Central underground station, Middlesex University, Brent Street and Sunny Hill Park.

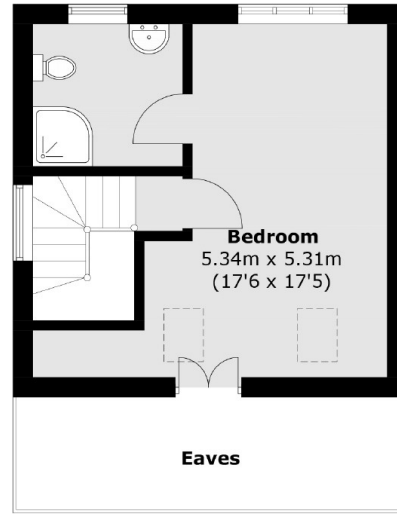
Features

Semi-Detached
Four Bedrooms
No Chain
Double Reception
Two Bathrooms
Garage

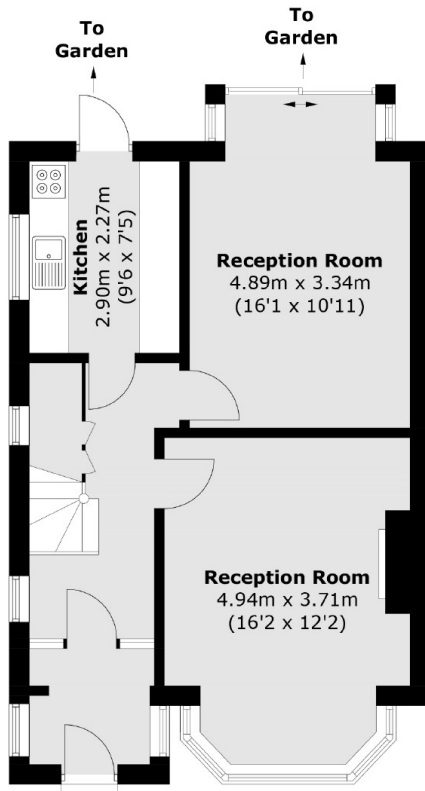
Watford Way,
London, NW4



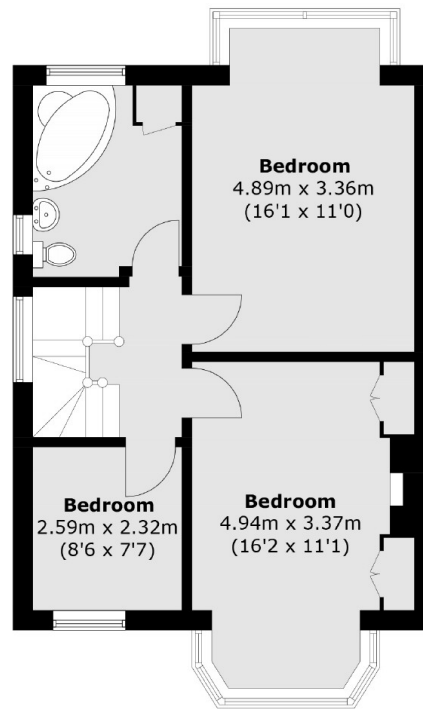
(Not Shown In Actual
Location / Orientation)



Second Floor



Ground Floor



First Floor

Total area (approx.): 132.1 sq. m (1,421.8 sq. ft)
Garage area (approx.): 18.3 sq. m (196.9 sq. ft)
(Excluding Eaves)