



Ashley Lane, NW4

£1,750,000

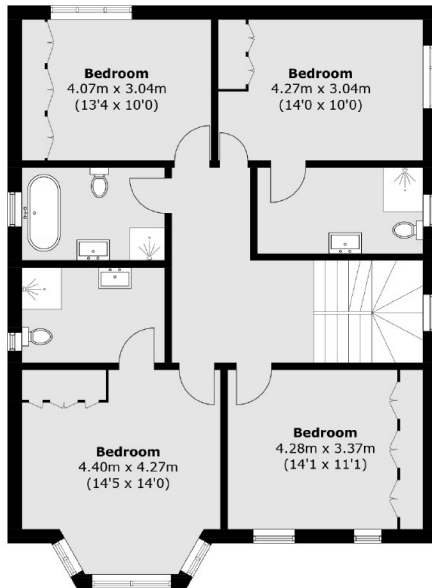
A substantial five bedroom detached house located on one of Hendon's most desirable roads overlooking the golf course. This stunning home is fantastic condition throughout, comes with four bathrooms, a large basement and offered chain free.

Ashley Lane is a highly desirable location in Hendon right next to the Golf Course and Dollis Brook. The property also has great transport links such as Mill Hill East tube station which is nearby.

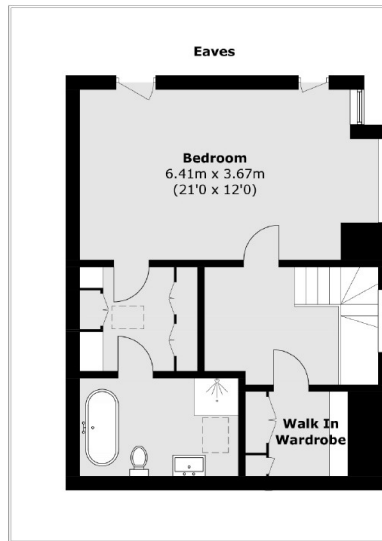
Features

- Detached
- Large Driveway
- Chain Free
- Five Double Bedrooms
- Large Basement
- High Spec Finish

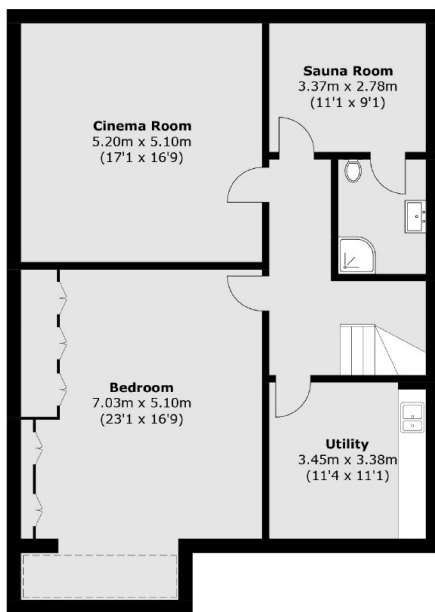
Ashley Lane, London, NW4



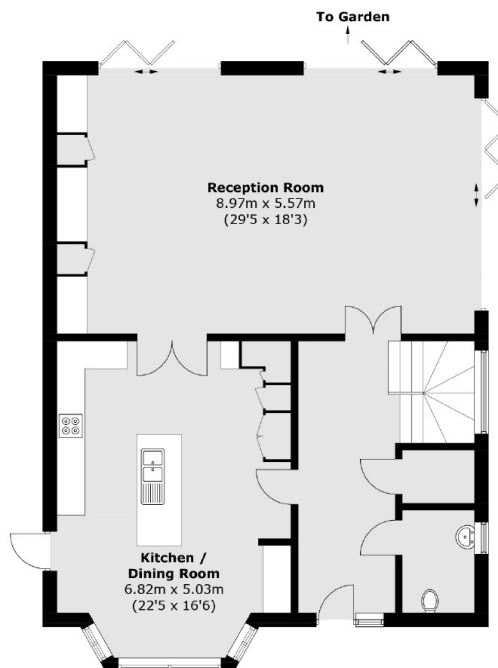
First Floor



Second Floor



Lower Ground Floor



Ground Floor

Total area (approx.): 358.0 sq. m (3,853.4 sq. ft)
(Excluding Eaves)