



## Wardell Close, NW7

£400,000

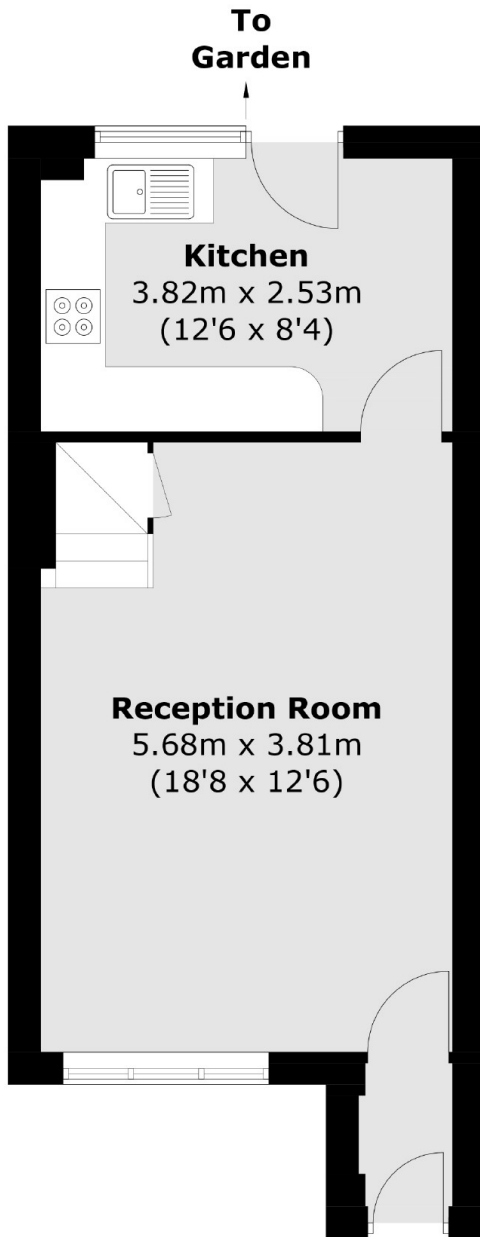
We are excited to offer this terraced house with two practical double bedrooms, excellent garden space and a large living and kitchen area. The property also comes with a secure garage and is being offered chain-free.

The property is positioned well to meet the needs of daily life being located within a walking distance of Mill Hill Broadway station and other everyday amenities. The property is located nearby to Orion primary school which is outstanding rated by Ofsted.

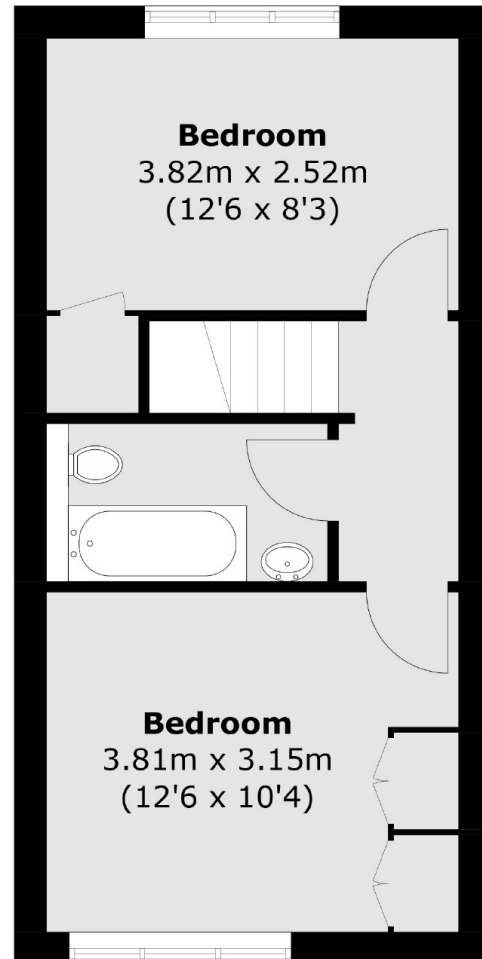
### Features

- Terraced House
- Freehold
- Two Double Bedrooms
- Private Garden
- Secure Garage
- Chain Free

Wardell Close,  
London, NW7



**Ground Floor**



**First Floor**

Total area (approx.): 64.5 sq. m (694.3 sq. ft)