

Hope Close, NW4

£400,000

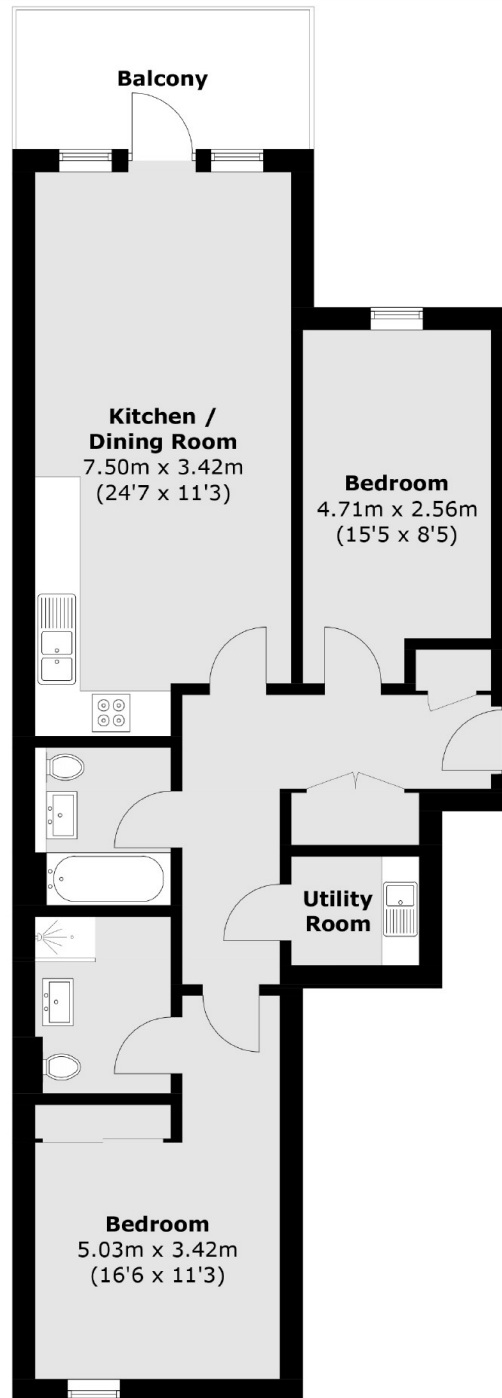
A fantastic two double bedroom ground floor flat set within this attractive modern building. This flat is in excellent condition, comes with two bathrooms, separate utility, private garden and comes chain free.

Located in this prestigious modern development at the rear of Ashley Lane, moments from Hendon Golf Course and Copthall Playing Fields, and accessible to Hendon Central Underground Station and Mill Hill East Underground Station, and main arterial routes.

Features

- Two Double Bedrooms
- Two Bathrooms
- Separate Utility
- Private Garden
- Excellent Condition
- Chain Free

Hope Close, London, NW4



Total area (approx.): 74.2 sq. m (798.7 sq. ft)
Balcony area (approx.): 7.2 sq. m (77.5 sq. ft)