



The Burroughs, NW4

£500,000

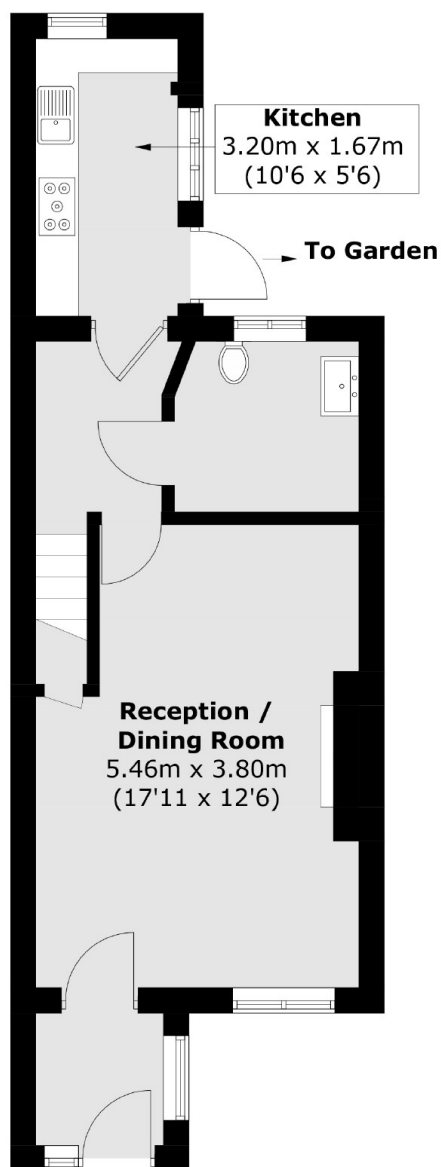
A characterful Grade II listed two double bedroom period Cottage. This charming home is in good condition throughout, has parking, a bathroom, private back garden and comes with no chain.

Conveniently located nearby Hendon Park, and within very close access of Hendon Central Underground Station and various shops, cafés and restaurants are moments away.

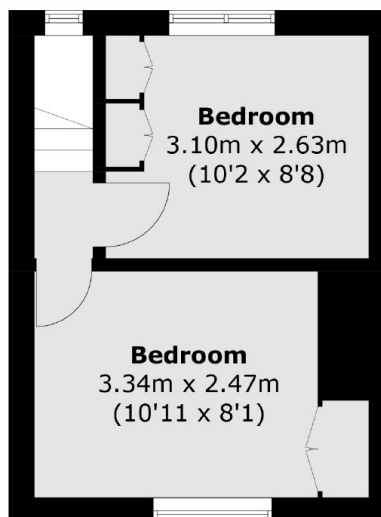
Features

- Grade II Listed Cottage
- Two Double Bedrooms
- Chain Free
- Conservatory
- Private Garden
- Parking

The Burroughs, London, NW4



Ground Floor



First Floor

Total area (approx.): 57.9 sq. m (623.2 sq. ft)