



Holders Hill Gardens, NW4 £825,000

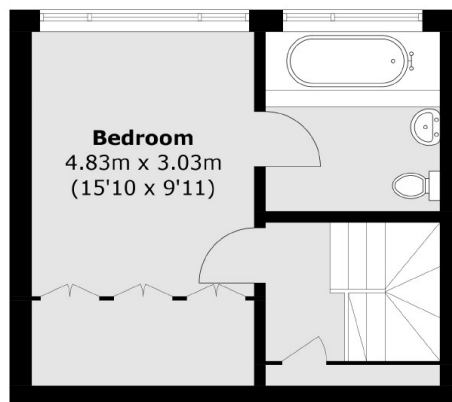
An excellent four bedroom semi-detached house located on a quiet leafy street. This fantastic family home comes with two bathrooms, a large driveway, separate kitchen, lovely private garden and has potential to extend.

Holders Hill Gardens is a hidden gem of a road, overlooking the luscious greenery of Windsor Open Space. This lovely home is within close proximity of local amenities, schools and Finchley Central Tube Station (Northern Line).

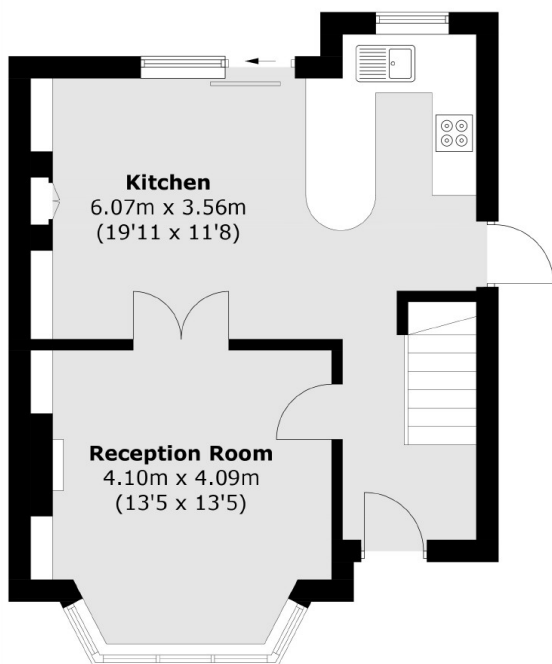
Features

- Semi-Detached
- Quiet & Leafy Street
- No Chain
- Two Bathrooms
- Private Driveway
- Potentials to Extend

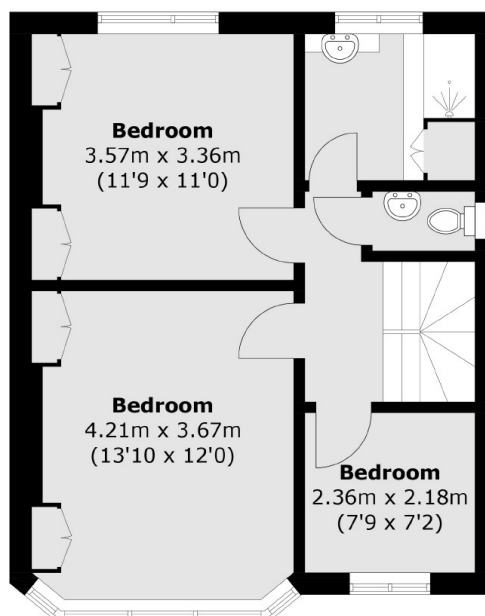
Holders Hill Gardens, London, NW4



Second Floor



Ground Floor



First Floor

Total area (approx.): 116.5 sq. m (1,254.0 sq. ft)