



Verulam Court, NW9

£280,000

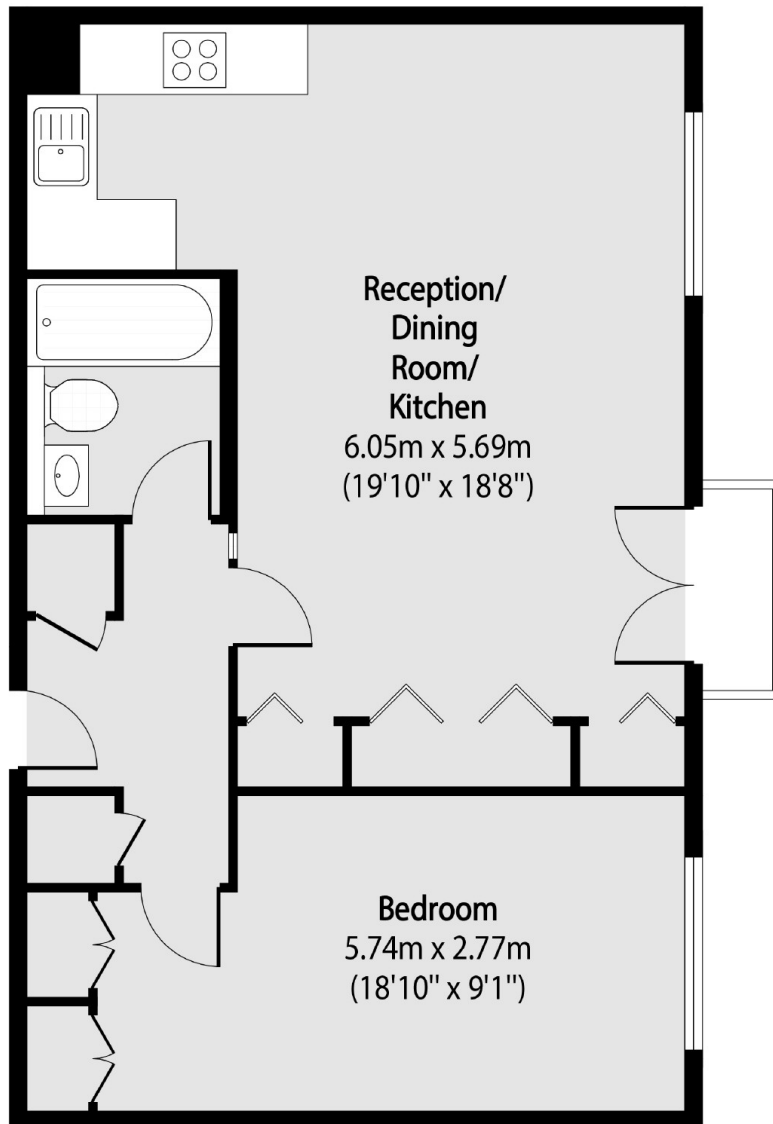
A fantastic fourth floor one bedroom apartment with lift access, benefitting from one double bedroom, a large open plan kitchen/reception room, bathroom, parking and private balcony.

Idyllically located overlooking the scenic Welsh Harp Nature Reserve and Reservoir and within easy access of Hendon Mainline Station.

Features

- One Bedroom Flat
- Open Plan Living
- Balcony
- Parking
- Chain Free
- Communal Gardens With Pool

Verulam Court, London, NW9



Total area (approx): 53.70 sq m (578 sq. ft)

Balcony total area (approx): 1.11 sq m (12 sq. ft)