



Colindeep Lane, NW9

£700,000

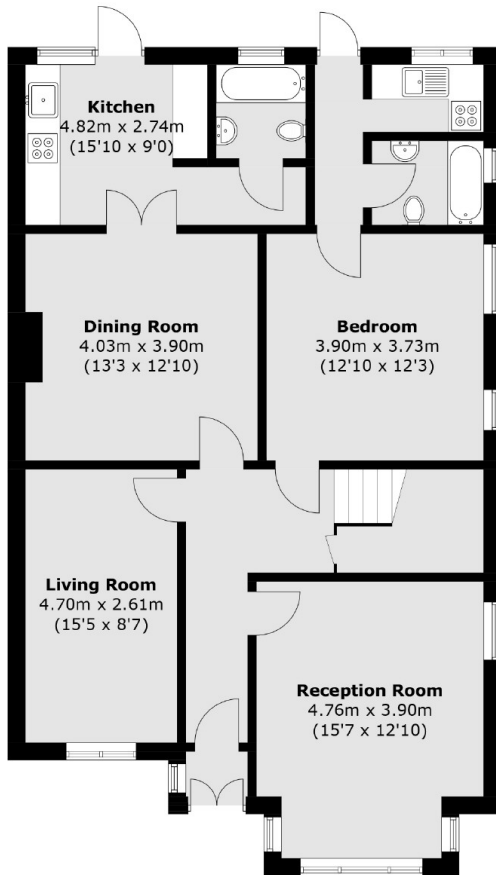
A spacious five bedroom semi-detached family home. The lovely family home has three bathrooms, separate kitchen, WC, three reception rooms, private garden and driveway with space for multiple cars with electric vehicle charger.

Colindeep Lane is located within a short distance to the local amenities of Edgware Road and Colindale Underground Station.

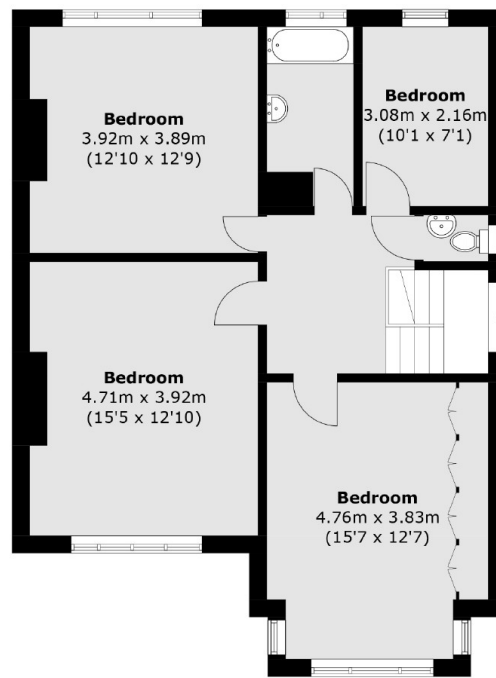
Features

- Semi-Detached
- Five Bedrooms
- Three Bathrooms
- Separate WC
- Three Reception Rooms
- Driveway

Colindeep Lane,
London, NW9



Ground Floor



First Floor

Total area (approx.): 175.8 sq. m (1,892.3 sq. ft)