



Station Road, NW4

£850,000

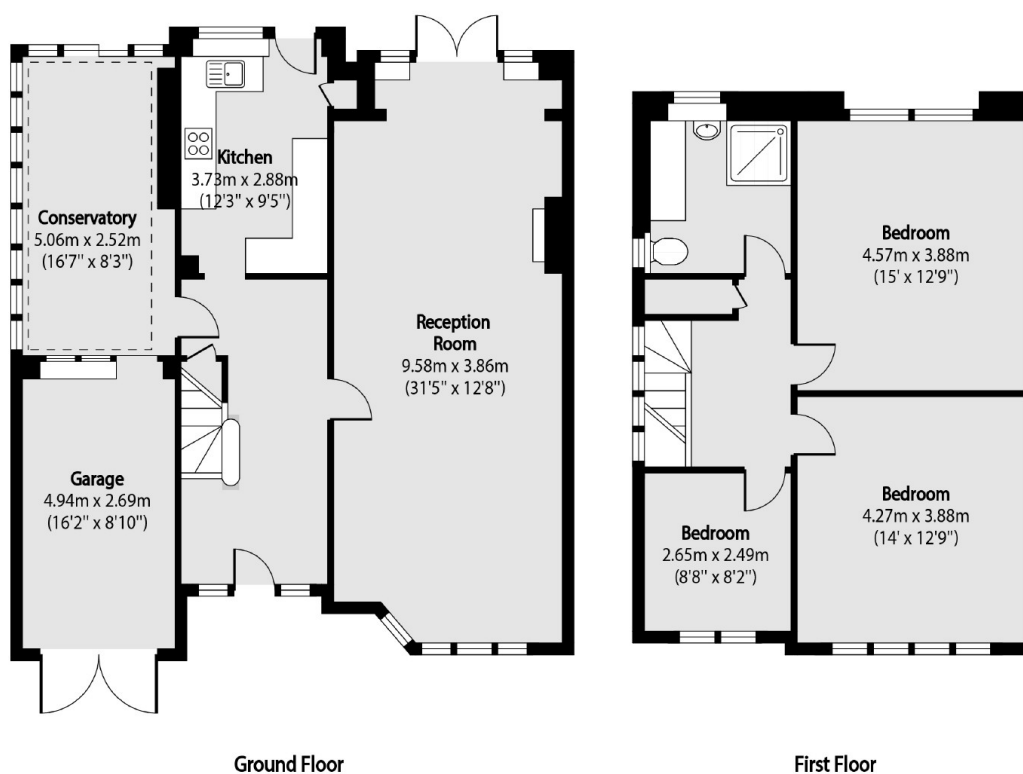
A three bedroom semi-detached house with lots of potential and is well located for Hendon's Transport links. This brilliant family home has a large mature garden, garage, potential to extend and private driveway.

This family home is conveniently located within close access of Hendon Central Underground Station (Northern Line) and Hendon Thameslink Station.

Features

- Semi-Detached
- Three Bedrooms
- Garage
- Large Mature Garden
- Potential To Extend
- Private Driveway

Station Road, London, NW4



Total area (approx): 145.00 sq m (1561 sq. ft)