



Park View Gardens, NW4

£1,499,950

A fantastic opportunity to purchase this substantial four bedroom family home in the sought-after Shirehall Estate. Benefits include two reception rooms, a guest WC and a beautifully landscaped garden.

Park View Gardens is situated in the highly sought-after Shirehall Estate. Conveniently located close to Brent Street, Golders Green and Hendon Park. Within easy access of Brent Cross and Hendon Central underground stations.

Features

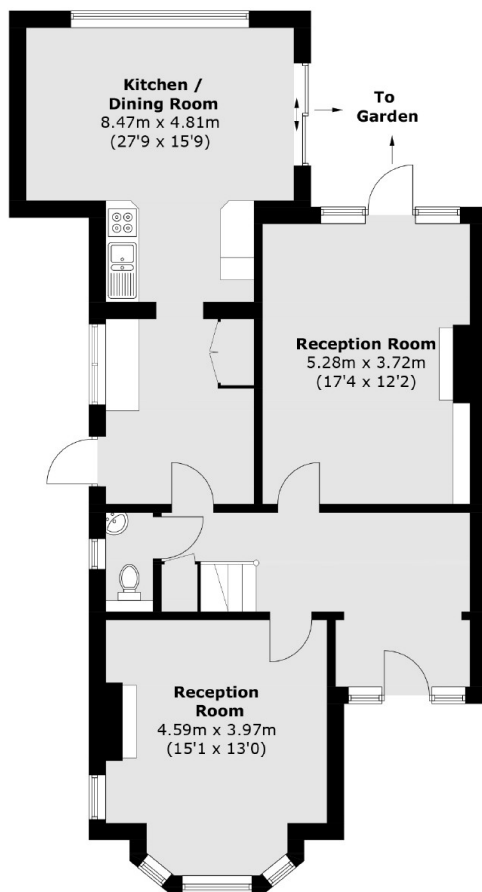
- Large Family Home
- Four Bedrooms
- Two Reception Rooms
- Kitchen/Diner
- Guest WC
- Potential to Extend



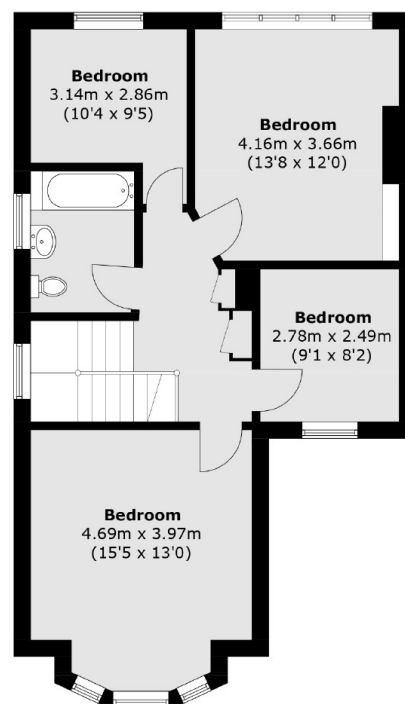
Park View Gardens, NW4



Park View Gardens, Hendon, NW4



Ground Floor



First Floor

Total area (approx.): 147.4 sq. m (1586.5 sq. ft)