



Chronicle Avenue, NW9

£500,000

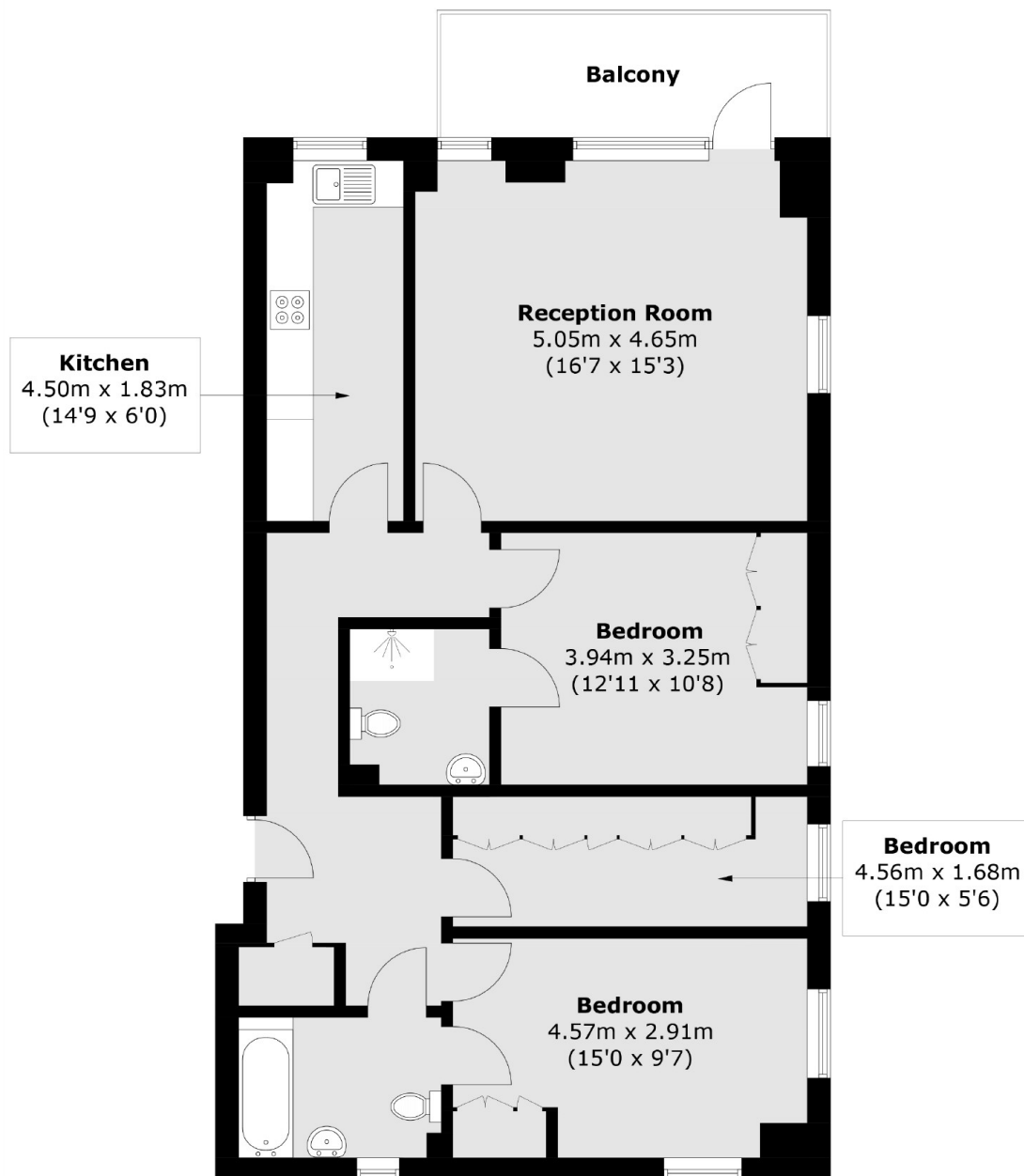
A spacious three double bedroom flat located within this handsome modern block. This awesome flat comes with private parking, two bathrooms, a spacious kitchen / reception room and a private balcony with stunning views.

Ledger Court, Chronicle Avenue is part of the stunning Edition development in Colindale. This flat is an excellent location for Colindale Tube Station (Northern Line) and various shops, cafés and restaurants in Colindale,

Features

- Three Bedrooms
- Two Bathrooms
- Allocated Parking
- Large Kitchen / Reception
- Superb Location
- Immaculate Condition

Chronicle Avenue, London, NW9



Total area (approx.): 90.7 sq. m (976.3 sq. ft)
Balcony : 7.9 sq. m (85.0 sq. ft)