



Moorhen Drive, NW9

£475,000

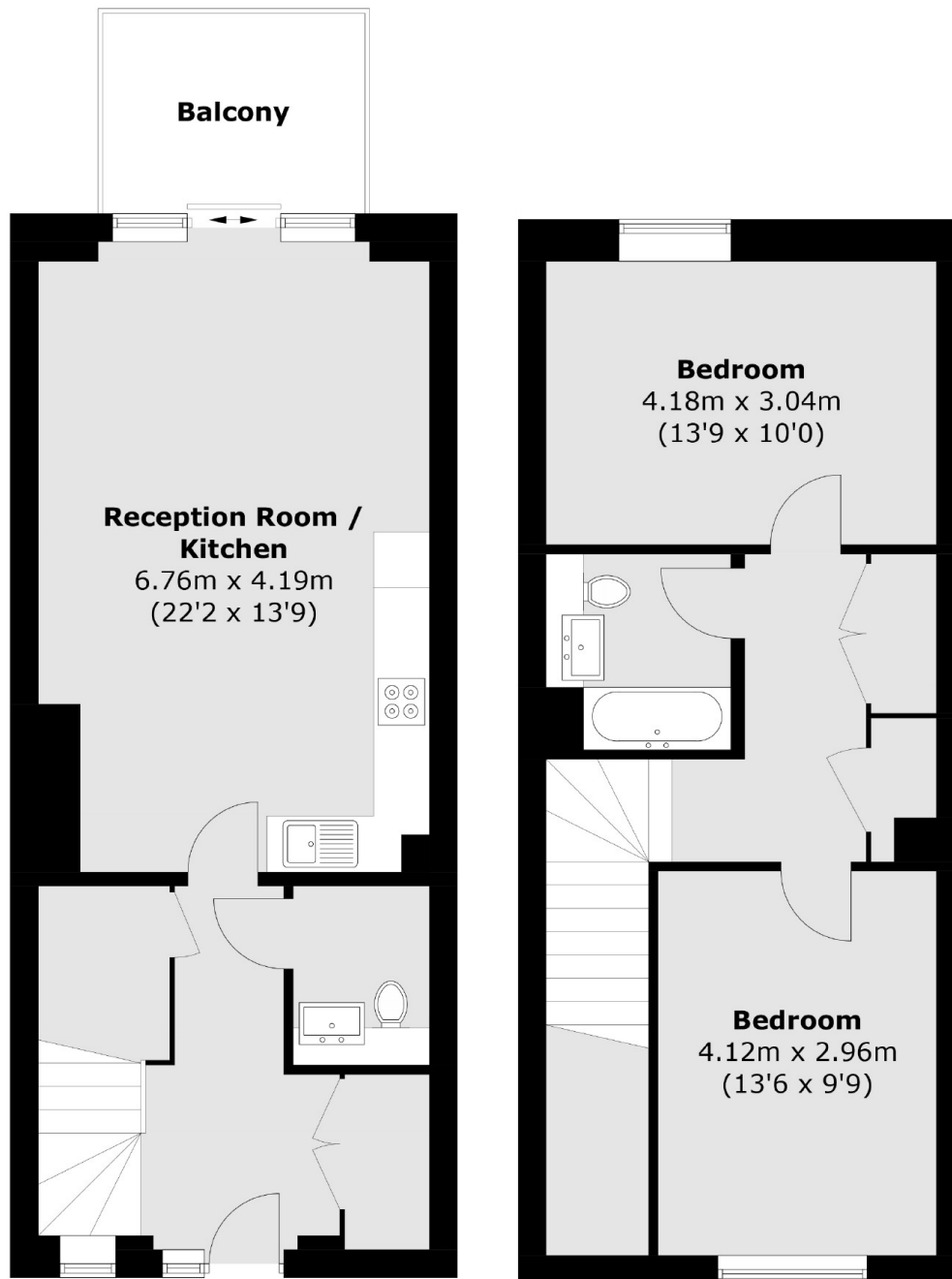
A superb and rarely available two double bedroom split-level flat located at Hendon Waterside. This delightful flat comes with parking, a private balcony, bathroom, separate W.C and ample storage.

This fabulous modern development is within close proximity of the Welsh Harp Reservoir, and is conveniently located close to Brent Cross Shopping Centre and Hendon Thameslink Station.

Features

- Two Double Bedrooms
- Private Balcony
- Residents Gym
- Split-Level
- Private Parking
- Separate W.C

Moorhen Drive, London, NW9



Ground Floor

First Floor

Total area (approx.): 89.6 sq. m (964.4 sq. ft)
Balcony area (approx.): 6.0 sq. m (64.6 sq. ft)