



Grove Park, NW9

£475,000

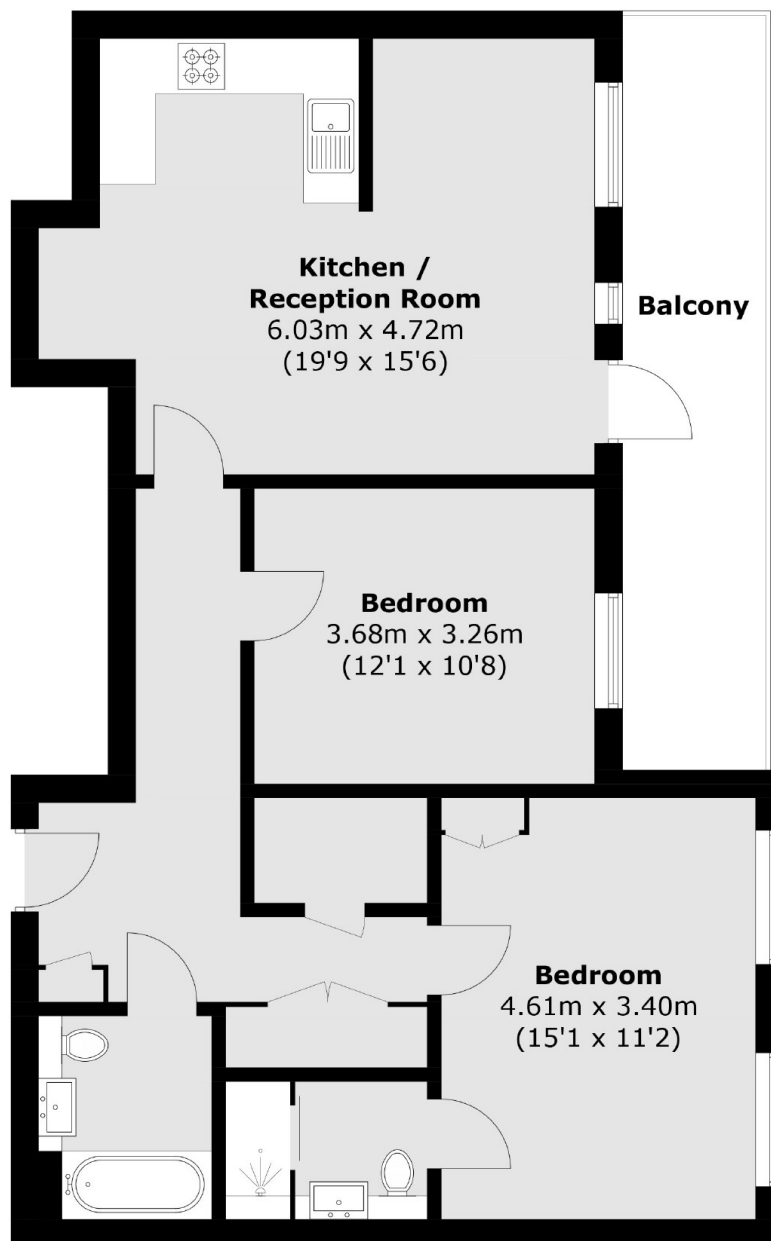
This fabulous bright apartment located in the modern development of Dove tree Apartments. This immaculate flat comes with a large private balcony, two double bedrooms, one en-suite and an underground parking space.

Grove park is located close to supermarkets such as Asda and Morrisons as well as Bang Bang Oriental Food Hall, great transport links including bus routes and Colindale Station (Northern Line) and local Gym facilities and many other amenities.

Features

- Allocated Parking
- Modern Development
- Large Balcony
- Two Bathrooms
- Communal Gardens
- Immaculate Condition

Grove Park, London, NW9



Total area (approx.): 78.6 sq. m (846.0 sq. ft)
Balcony: 12.7 sq. m (136.7 sq. ft)

Dexters

Hendon
18 Central Circus
London
NW4 3AS
Sales
020 8545 8586

Energy Rating: B. We aim to make our particulars both accurate and reliable. However they are not guaranteed; nor do they form part of an offer or contract. If you require clarification on any points then please contact us, especially if you're traveling some distance to view. Please note that appliances and heating systems have not been tested and therefore no warranties can be given as to their good working order.

 **RICS** | Regulated
Estate Agent
and Letting Agent

[dexters.co.uk](https://www.dexters.co.uk)