



Montagu Road, NW4

£315,000

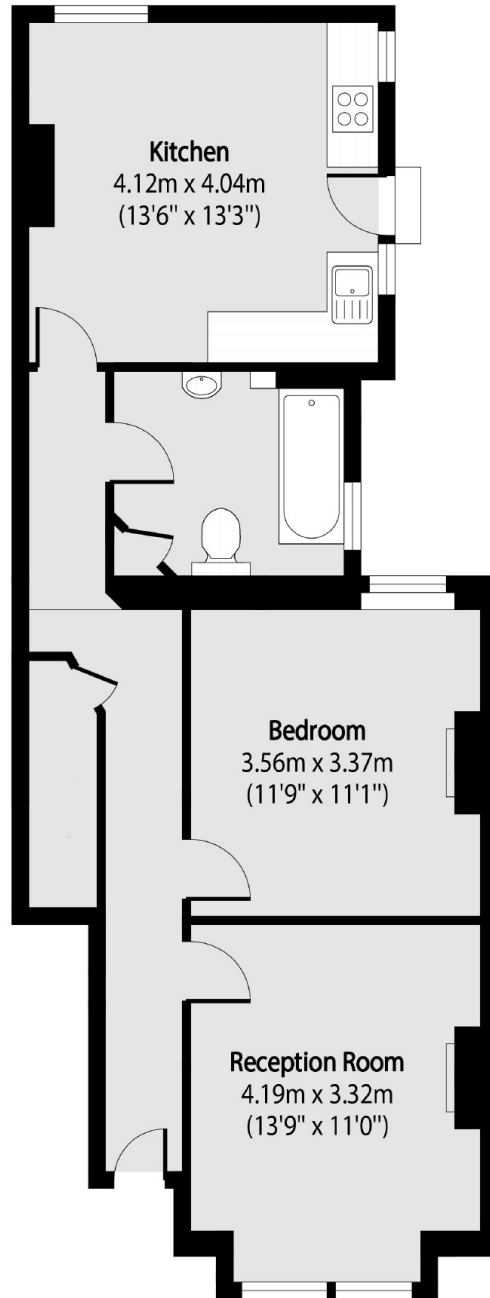
An excellent one bedroom ground floor conversion located on the popular Montagu Road. This charming flat is a perfect first time project that comes with a private patio garden and no chain.

Montagu Road is a lovely tree lined street, located within easy access of Hendon Underground Station (Northern Line) and Hendon Thameslink (Overground).

Features

- Large Double Bedroom
- Ground Floor
- Period Conversion
- Private Garden
- Chain Free
- Needs Modernising

Montagu Road, London, NW4



Total area (approx): 63.02 sq m (678 sq. ft)