



Brent Park Road, NW4

£525,000

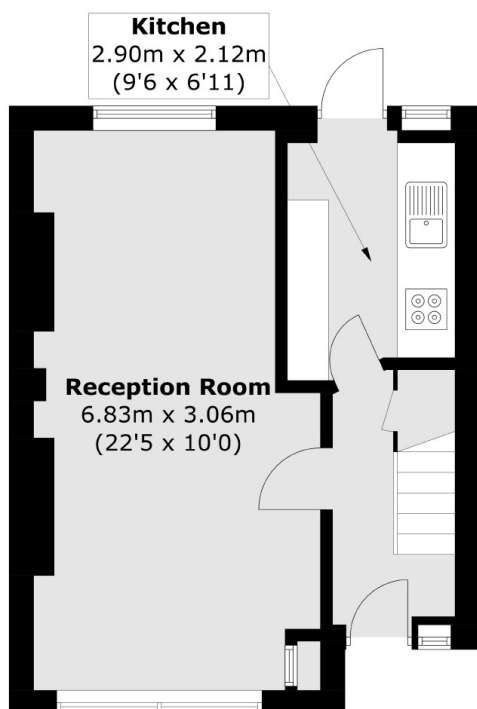
A charming end of terrace three bedroom house located on a popular family road. This lovely home has potential to extend, a private front and back garden and is offered chain free.

This superb house is conveniently located close to Brent Cross Shopping Centre, Hendon Thameslink Overground and Hendon Central Underground (Northern Line).

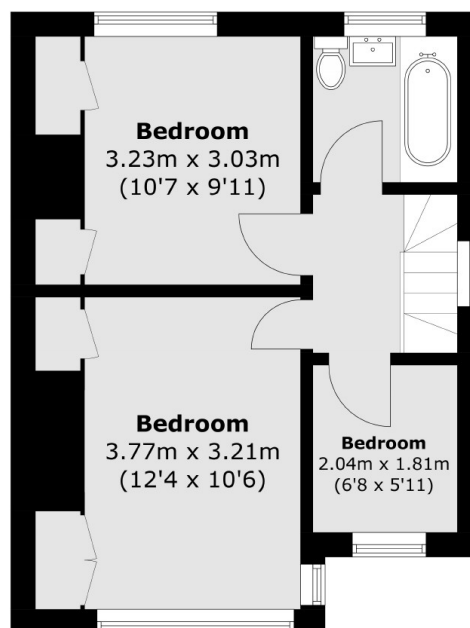
Features

- Three Bedrooms
- End of Terrace
- Chain Free
- Potential to Extend
- Separate Kitchen
- Quiet Location

Brent Park Road, London, NW4



Ground Floor



First Floor

Total area (approx.): 68.1 sq. m (733.0 sq. ft)