



Grove Park, NW9

£450,000

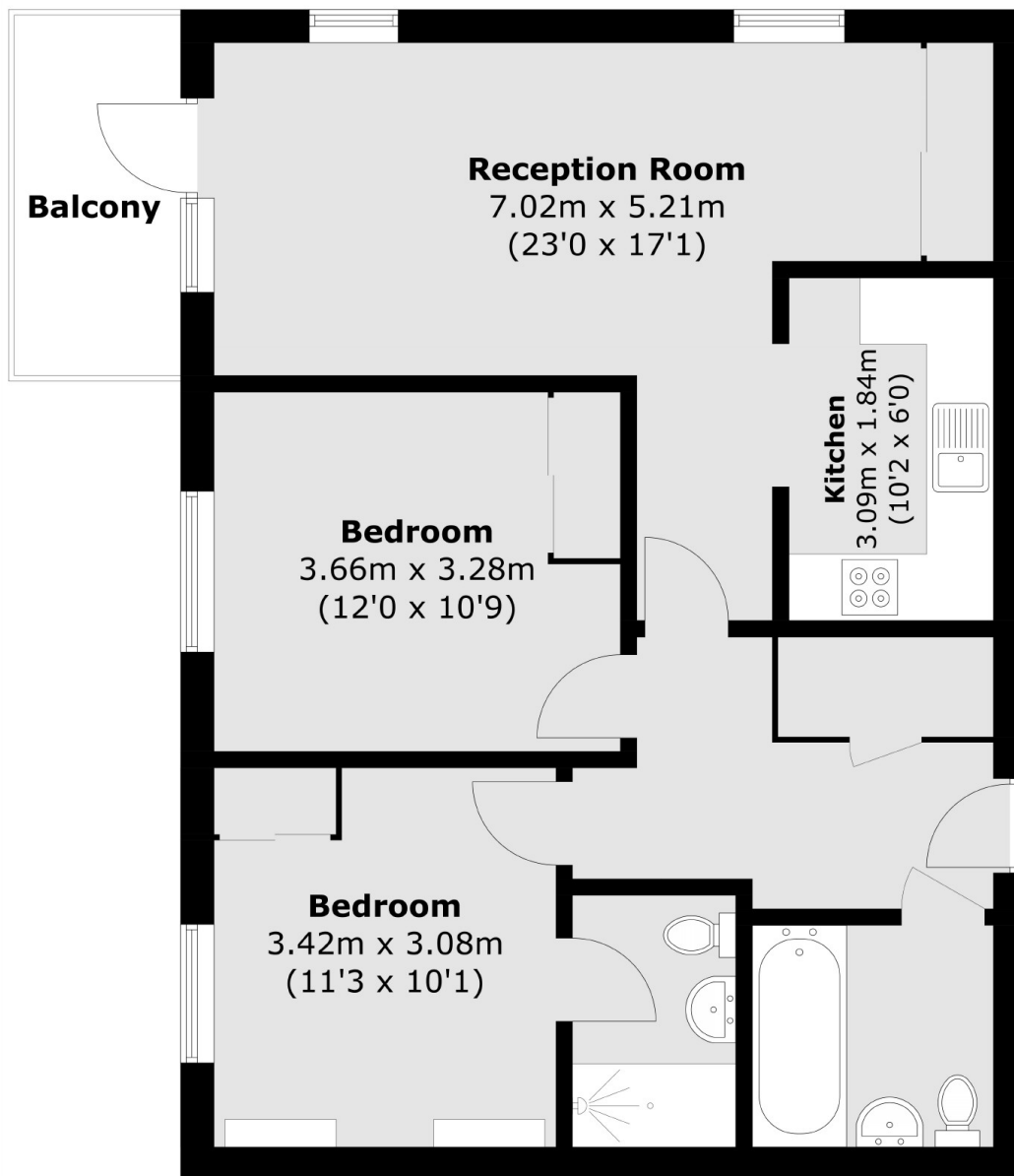
This fantastic bright and light modern flat is located in the highly desirable Sherrans House. This charming flat comes with a private west facing balcony, two bedrooms and two bathrooms, an underground allocated parking space and is excellent condition throughout.

Grove Park is located close to supermarkets such as Asda and Morrisons as well as Bang Bang Oriental Food Hall, great transport links including bus routes and Colindale Station (Northern Line) and local Gym facilities nearby.

Features

- Private Balcony
- Private Parking Space
- Great Storage
- Immaculate Condition
- Functional Layout
- Convenient Location

Grove Park, London, NW9



Total area (approx.): 70.2 sq. m (755.6 sq. ft)
Balcony area (approx.): 4.9 sq. m (52.7 sq. ft)