



## Caversham Road, NW9

£560,000

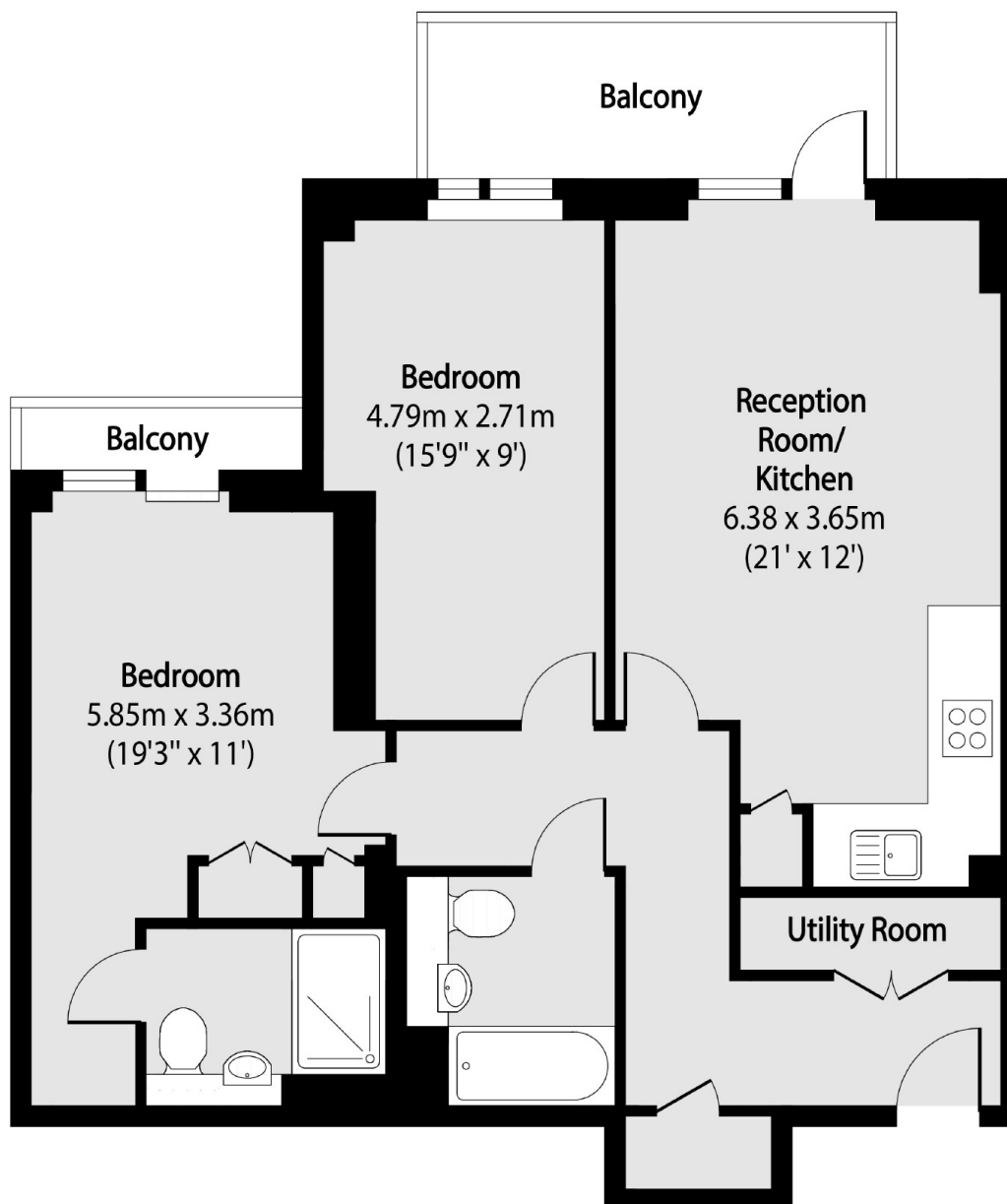
A luxurious two bedroom apartment in the ever popular Beaufort Park Development. Presented in excellent condition, this modern property benefits from two bathrooms, two balconies and private parking.

Caversham Road is situated within the Beaufort Park Development, the residents of which have access to the on-site gym and spa. Situated in the heart of Colindale and just moments from Colindale Tube Station (Northern Line) as well as numerous eateries, shops and other local amenities.

### Features

- Modern Block
- Two Double Bedrooms
- Two Bathrooms
- Two Balconies
- Parking
- Access to Gym and Spa

# Caversham Road, London, NW9



Total area (approx): 72.83 sq m (784 sq. ft)

Balcony total area (approx): 8.22 sq m (88 sq. ft)