



Shearwater Drive, NW9

£2,100 Per calendar month

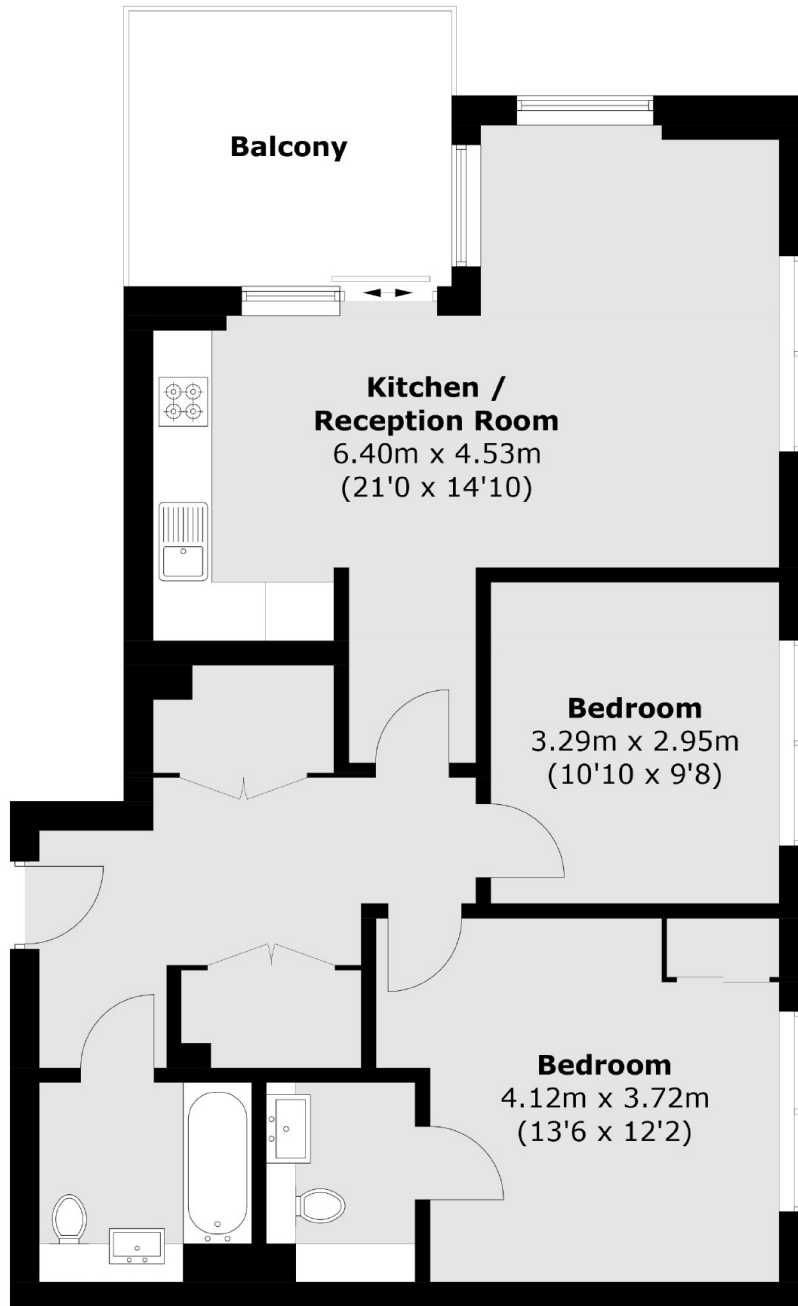
A new two double bedroom, two bathroom luxury apartment on the thirteenth floor (with lift access) of a popular waterside development. The property consists of a spacious open-plan living space with fully fitted kitchen and dining area, an en-suite shower/WC to main bedroom, a separate family bathroom/WC and large balcony with lake views. Additional benefits include off-street parking and communal gardens.

Conveniently located approximately 0.4 miles from Hendon Mainline Station and within close proximity of Hendon Underground Station and Brent Cross Shopping Centre.

Features

- Luxury Waterside Living
- Spacious Apartment
- Lift Access
- Private Balcony/Terrace
- Off Street Parking
- Communal Gardens

Shearwater Drive, London, NW9



Total area (approx.): 74.9 sq. m (806.2 sq. ft)
Balcony: 9.4 sq. m (101.2 sq. ft)