



Sunny View, NW9

£750,000

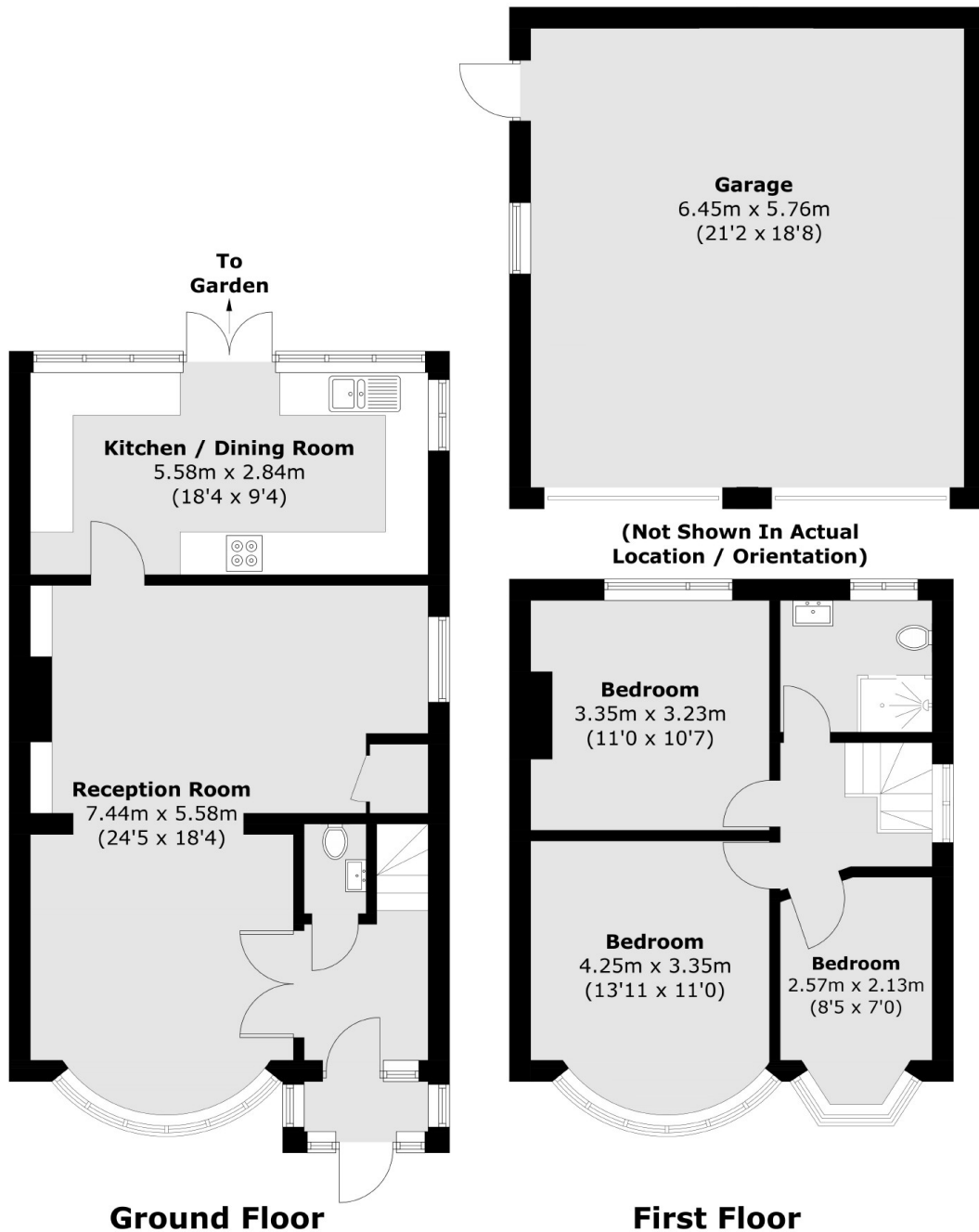
A spacious semi-detached house offers a fresh and bright decor throughout having potential for further expansion (STPP). The property benefits off-street parking as well as a double garage, with a very large generous garden.

This house within Sunny View is located at the end of a peaceful cul-de-sac positioned just off the sought-after Wakemans Hill Avenue and short distance from Roe Green Park.

Features

- Semi-Detached
- Large Generous Garden
- Double Garage
- Quiet Cul-De-Sac
- Bright Modern Finish
- Extension Potential (STPP)

Sunny View, London, NW9



Total area (approx.): 96.2 sq. m (1,035.5 sq. ft)
Garage area (approx.): 37.4 sq. m (402.6 sq. ft)