



Elliot Road, NW4

£6,500 Per calendar month

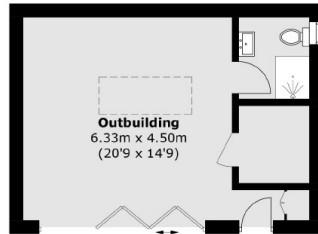
A newly refurbished, luxury detached house offering six bedrooms, through lounge, modern open plan fitted kitchen, office/study room, spacious utility room, downstairs guest shower/WC, large family bathroom/WC, en-suite to two bedrooms, well maintained rear garden with patio area and side access, well equipped self contained gym in the garden, and off street parking for two/three cars to front

Well presented and located family home within easy reach of Hendon Central and Brent Cross Shopping Centre, and a short drive to Golders Green

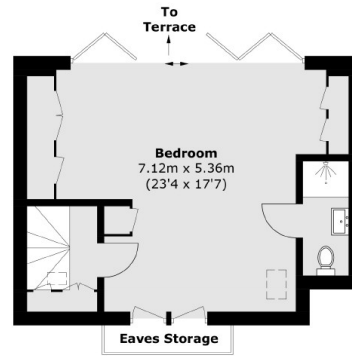
Features

- Luxury Condition
- Detached Family Home
- Close to Local Amenities
- Four Bathrooms
- Garden & Gym
- Off Street Parking

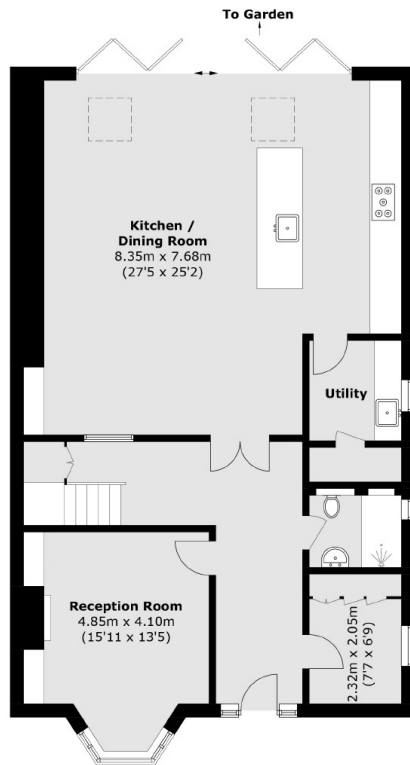
Elliot Road, London, NW4



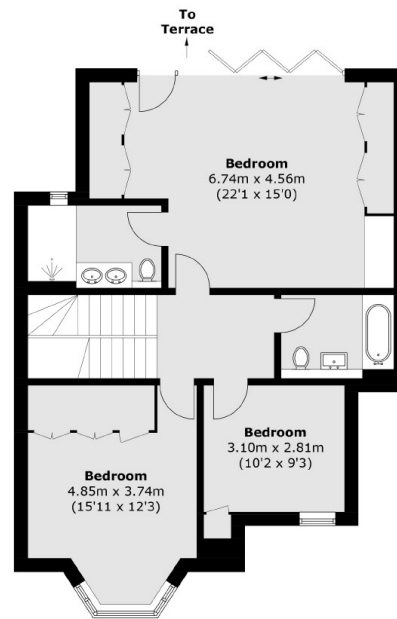
(Not Shown In Actual
Location / Orientation)



Second Floor



Ground Floor



First Floor

Total area (approx.): 230.2 sq. m (2,477.8 sq. ft)
(Excluding Eaves Storage)
Outbuilding: 29.1 sq. m (313.2 sq. ft)