



Moorhen Drive, NW9

£425,000

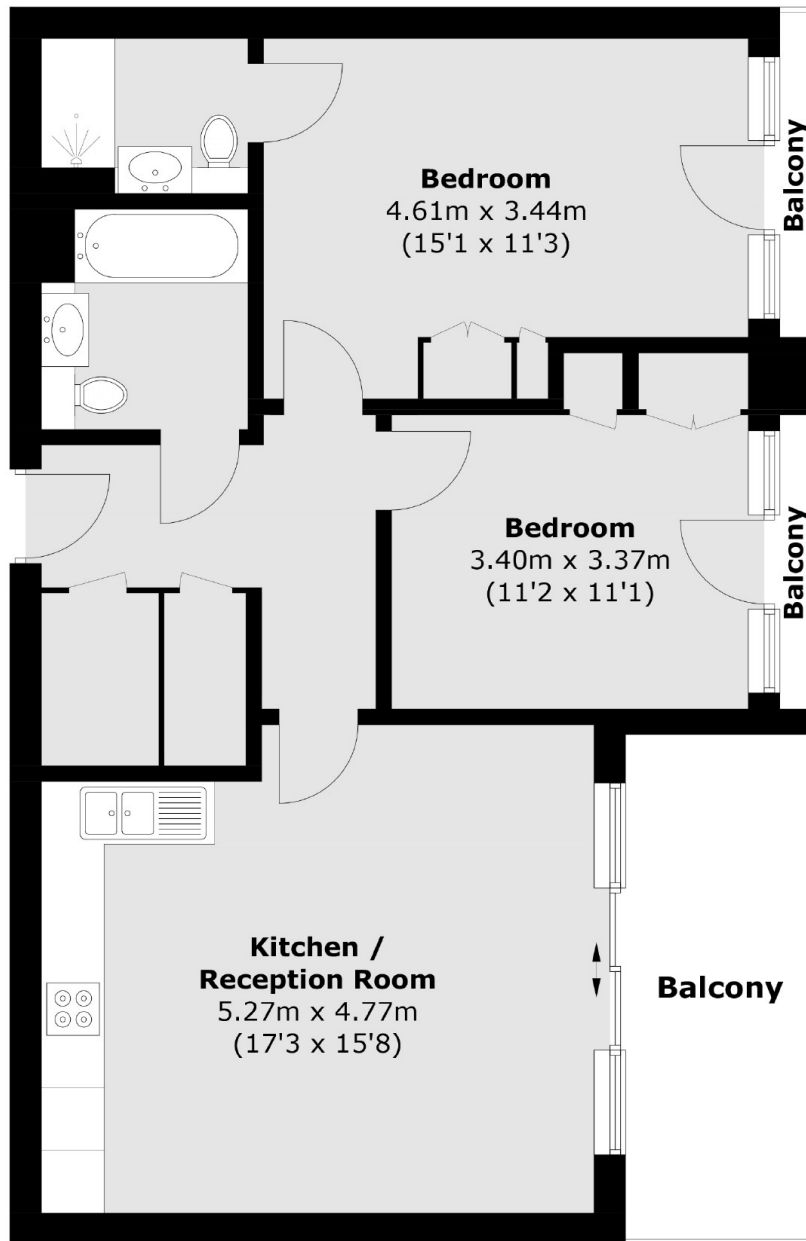
An excellent and bright two double bedroom flat located within handsome modern development. This home comes with two bathrooms, a private balcony, is in great condition throughout and comes with no chain.

This excellent modern development overlooks the Welsh Harp Nature Reserve and Reservoir, and is conveniently located close to Brent Cross Shopping Centre and Hendon Thameslink Station.

Features

- Two Double Bedrooms
- Two Bathrooms
- Private Balcony Lake View
- No Chain
- Great Condition
- Modern Development

Moorhen Drive,
London, NW9



Total area (approx.): 69.1 sq. m (743.8 sq. ft)
Balcony: 10.3 sq. m (110.9 sq. ft)