



High Mount, NW4

£400,000

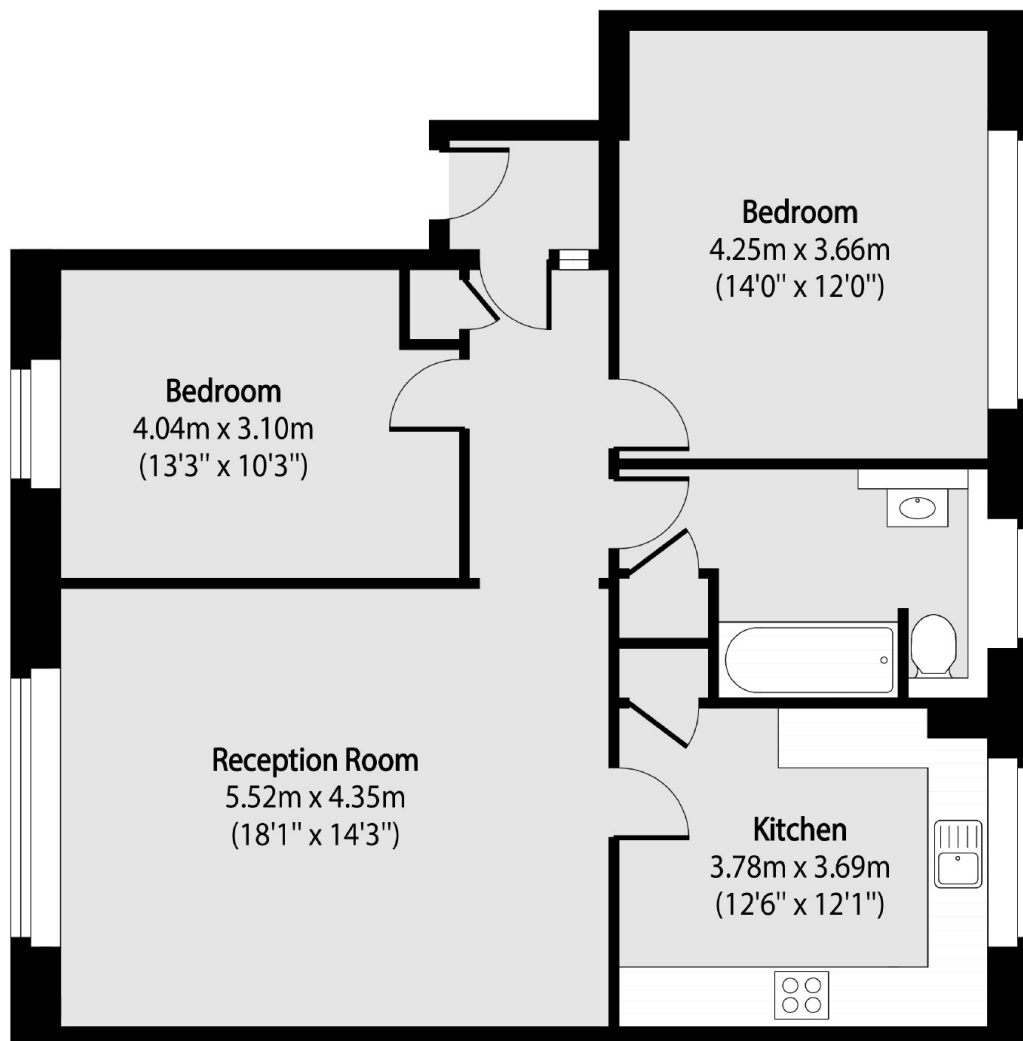
A spacious and light two double bedroom flat in this sought after popular block. This excellent home, in great condition, comes with a garage, private parking space and a separate kitchen.

High Mount is conveniently located within easy reach of both Hendon Central Underground Station (Northern Line) and Hendon Thameslink Station (Overground).

Features

- Two Double Bedrooms
- Great Condition Throughout
- Garage
- Parking Space
- Spacious and Light
- Separate Kitchen

High Mount, London, NW4



Total area (approx): 82.05 sq m (883 sq. ft)