

## Zenith Close, NW9

£400,000

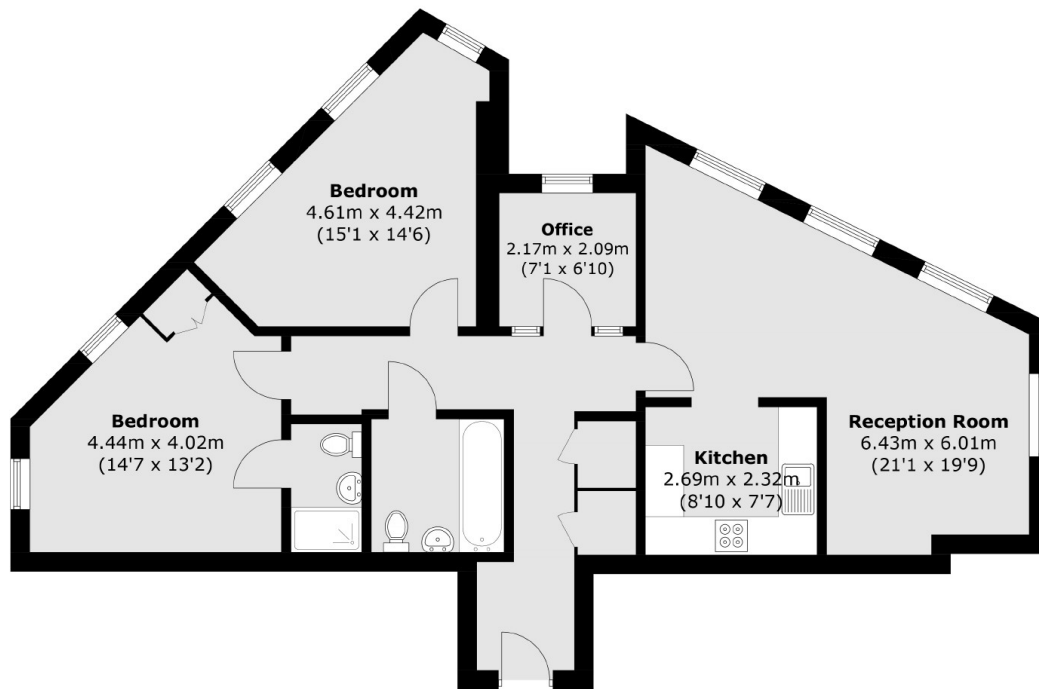
An excellent two double bedroom flat set within this desirable modern building. This home comes with two bathrooms, in great condition and a winter garden making a superbly bright home office for the current owners.

Zenith Close is located close to supermarkets such as Asda and Morrisons as well as Bang Bang Oriental Food Hall, has great transport links Colindale Station (Northern Line) is a short walk away, bus routes nearby and local Gym facilities.

### Features

- Two Double Bedrooms
- Two Bathrooms
- Great Condition
- Modern Development
- Winter Garden
- Concierge

# Zenith Close, London, NW9



Total area (approx.): 85.0 sq. m (914.9 sq. ft)