

## Shirehall Lane, NW4

£2,100 Per calendar month

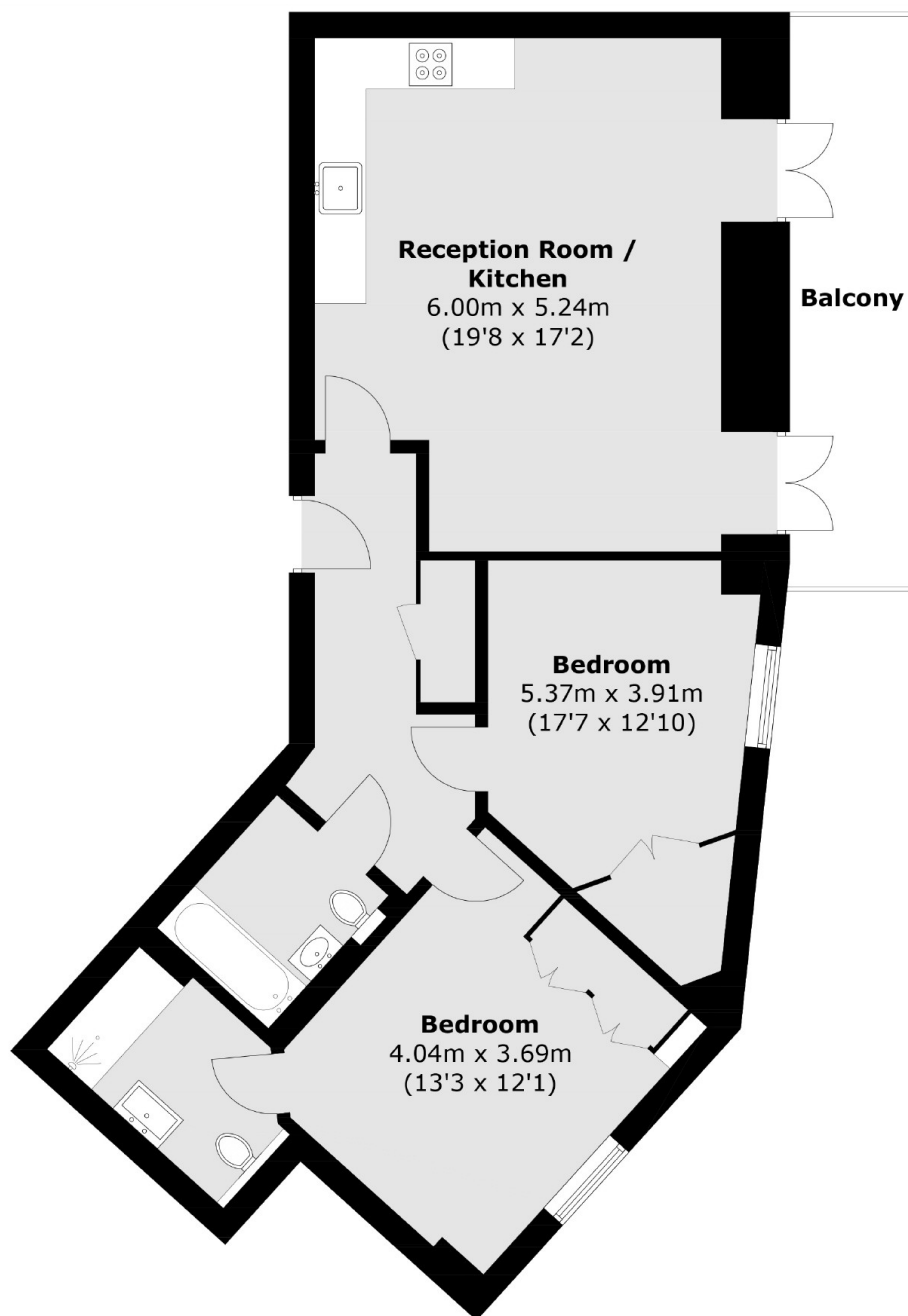
A new purpose built apartment on the third floor (with lift access) offering two bedroom, two bathrooms apartment, fully fitted kitchen open to spacious living room, modern family bathroom/WC, en-suite shower/WC to main bedroom, air conditioning and communal gardens.

Located within easy access to the local amenities of Brent Street and Brent Cross Shopping Centre. Brent Cross and Hendon Central underground station (Northern line) are also within easy reach.

### Features

- Brand New
- Spacious
- Two Bathrooms
- Balcony
- Air Conditioning
- Close to Local Amenities

# Shirehall Lane, London, NW4



Total area (approx.): 74.2 sq. m (798.7 sq. ft)  
Balcony area (approx.): 9.8 sq. m (105.5 sq. ft)