



Hope Close, NW4

£415,000

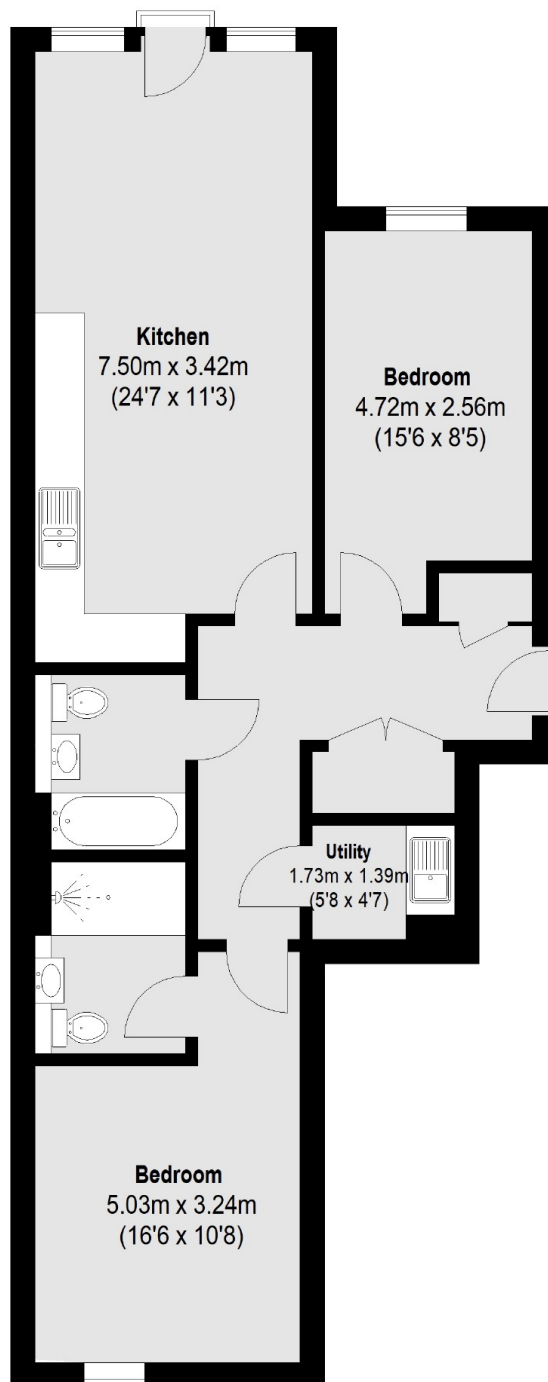
A fabulous two double bedroom, two bathroom, first floor apartment, finished to a high specification and benefitting from an utility room and secure underground parking.

Located in this prestigious modern development at the rear of Ashley Lane, moments from Hendon Golf Course and Copthall Playing Fields, and accessible to Hendon Central Underground Station and Mill Hill East Underground Station, and main arterial routes.

Features

- Modern Purpose-Built Block
- Two Double Bedrooms
- Two Bathrooms
- Utility Room
- Underground Parking
- Gated Development

Hope Close, Hendon, NW4



Total area (approx.): 75.46 sq. m (812 Sq. ft)