



Newark Way, NW4

£900,000

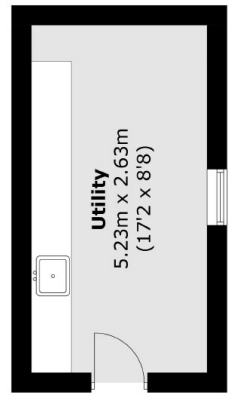
A fantastic four bedroom semi-detached house located on a quiet cul-de-sac. This characterful house has huge potential to extend, two bathrooms (one en-suite), private driveway and huge secluded garden.

Located close to Middlesex University, Sunny Hill Park, Brent Street's shopping and transport facilities, and within access of Hendon Central Underground Station (Northern Line).

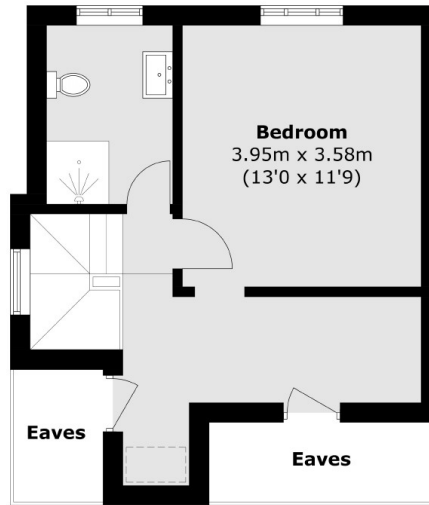
Features

- Semi-Detached
- Two Bathrooms
- Large Garden
- Private Driveway
- Huge Potential to Extend
- High Quality Finish

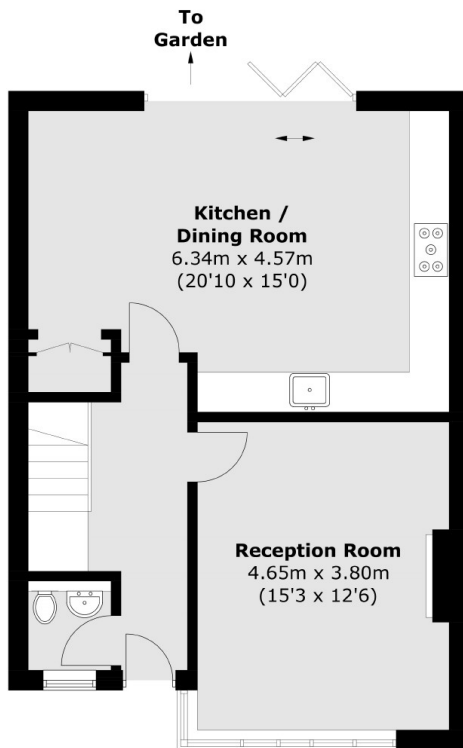
Newark Way, London, NW4



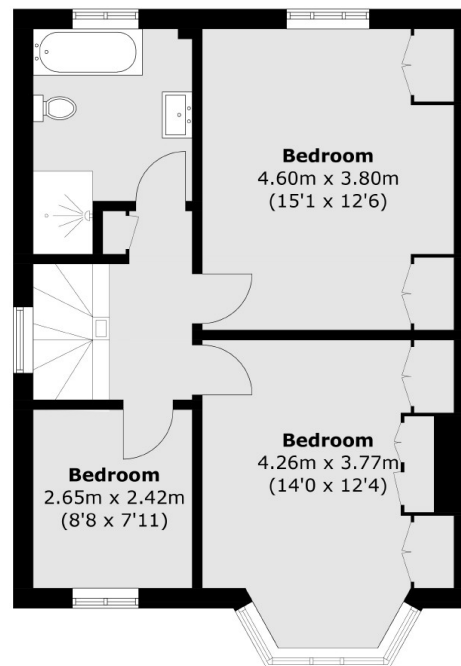
Outbuilding
(Not Shown In Actual
Location / Orientation)



Second Floor



Ground Floor



First Floor

Total area (approx.): 146.4 sq. m (1,575.8 sq. ft)
Outbuilding (approx.): 14.0 sq. m (150.7 sq. ft)
(Excluding Eaves)