



Silverworks Close, NW9

£350,000

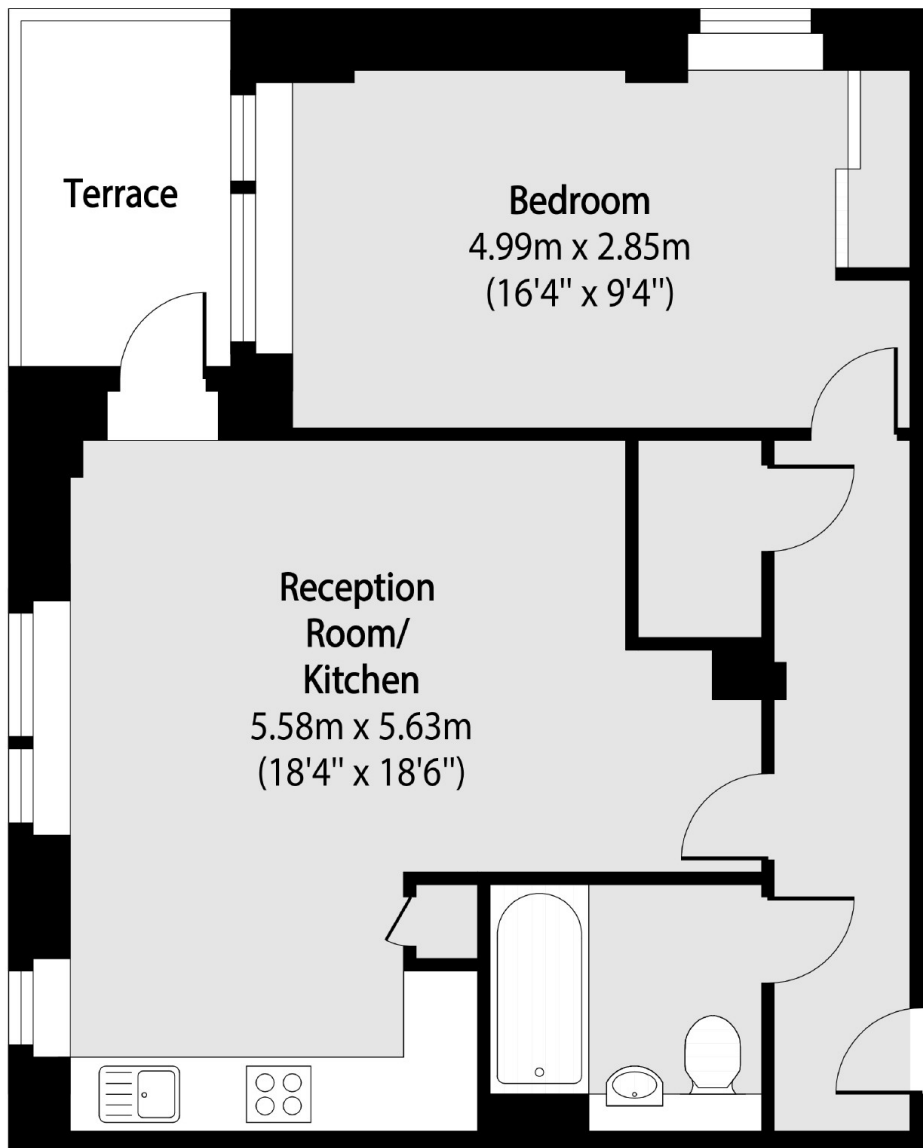
This fantastic bright and light modern flat is located in the handsome Arrandene Apartments. This immaculate flat comes with a private balcony with stunning views, a private parking space and is offered chain free.

Silverworks Close is located close to supermarkets such as Asda and Morrisons as well as Bang Bang Oriental Food Hall, great transport links including bus routes and Colindale Station (Northern Line) and local Gym facilities and the range amenities of Beaufort Park.

Features

- Private Balcony
- Private Parking Space
- Large Bedroom
- Immaculate Condition
- Chain Free
- Communal Gardens

Silverworks Close, London, NW9



Total area (approx): 52.95 sq m (570 sq. ft)

Terrace total area (approx): 4.76 sq m (51 sq. ft)