



## Boulevard Drive, NW9

£300,000

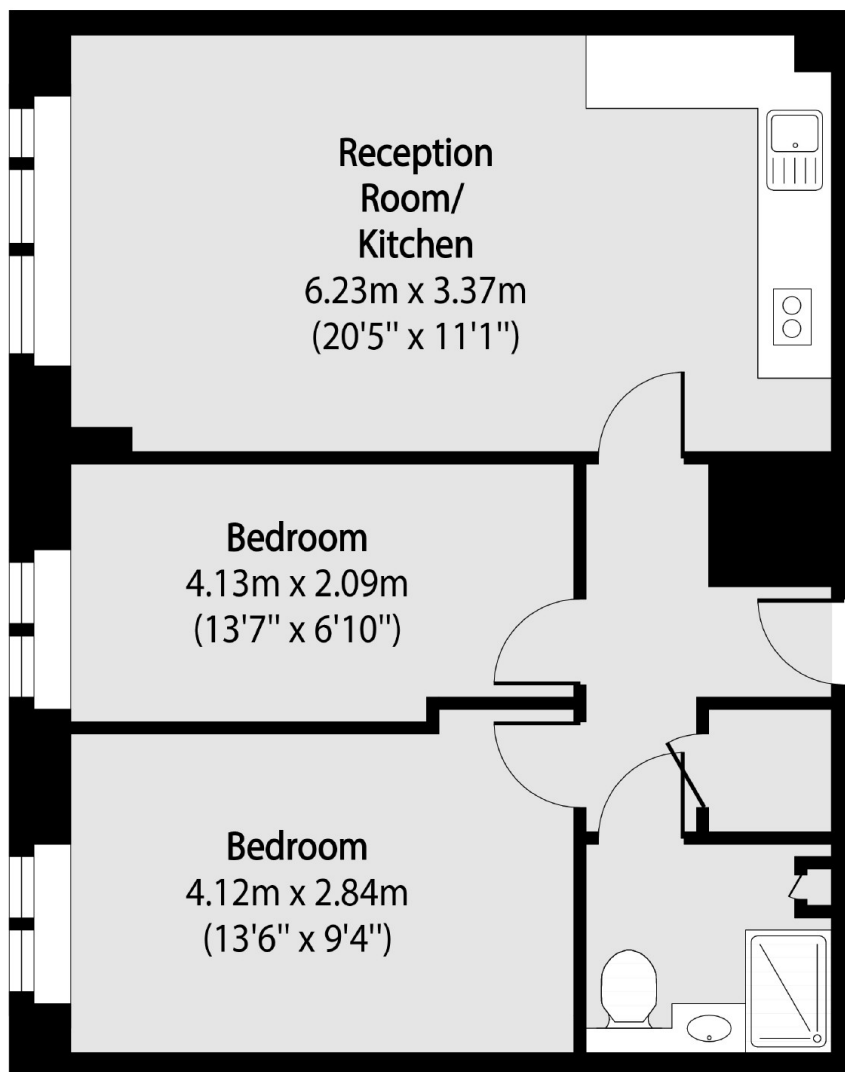
A very well presented and bright two double bedroom flat located with the prestigious Beaufort Park. This charming home is in good condition throughout, one bathroom, has communal gardens and comes with no chain.

Situated in the heart of Colindale and just moments from Colindale Tube Station (Northern Line) as well as numerous eateries, shops and other local amenities. Gym facilities and other transport links are also close by.

### Features

- Two Bedrooms
- Bathroom
- No Chain
- Good Condition
- Communal Gardens
- Bright and Spacious

# Boulevard Drive, London, NW9



Total area (approx): 51.37 sq m (553 sq. ft)