



Robin Lane, NW4

£600,000

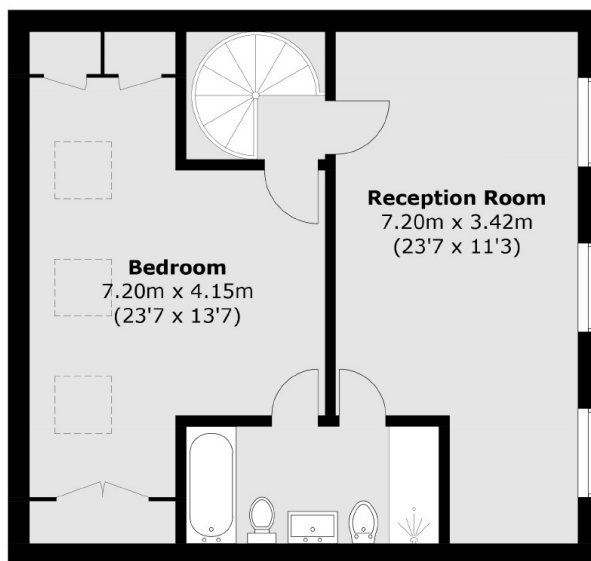
An excellent and very generous three bedroom semi-detached chalet bungalow. This lovely home is offered chain free, has a luscious large garden, private driveway and two big bathrooms.

Located in this quiet cul-de-sac, near to Hendon Golf Course and Windsor Open Space and is close proximity to Parsons Street and Brent Street. This property has good connections to the A1, M1 and A406.

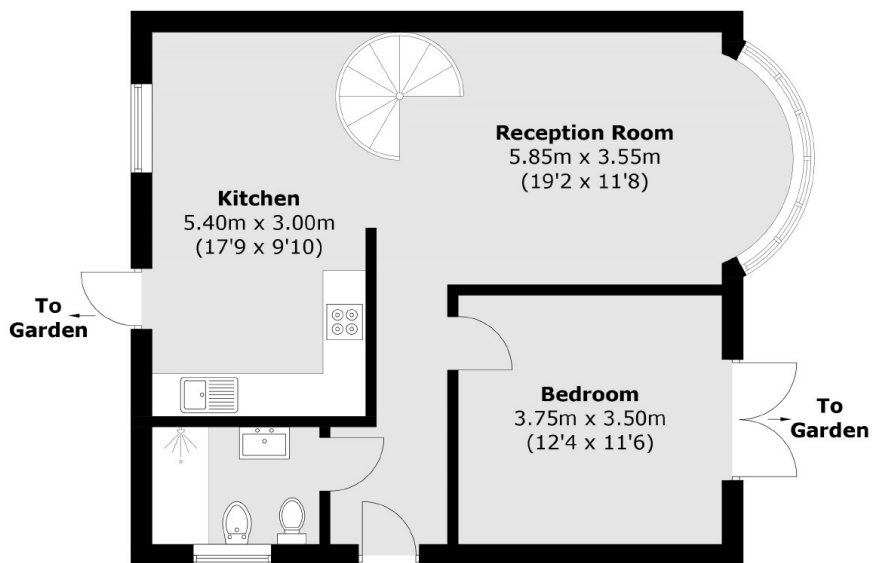
Features

- Chain Free
- Chalet Bungalow
- Private Driveway
- Big Garden
- Three Bedrooms
- Two Bathrooms

Robin Lane, London, NW4



First Floor



Ground Floor

Total area (approx.): 115.6 sq. m (1,244.3 sq. ft)