



Barford Close, NW4

£800,000

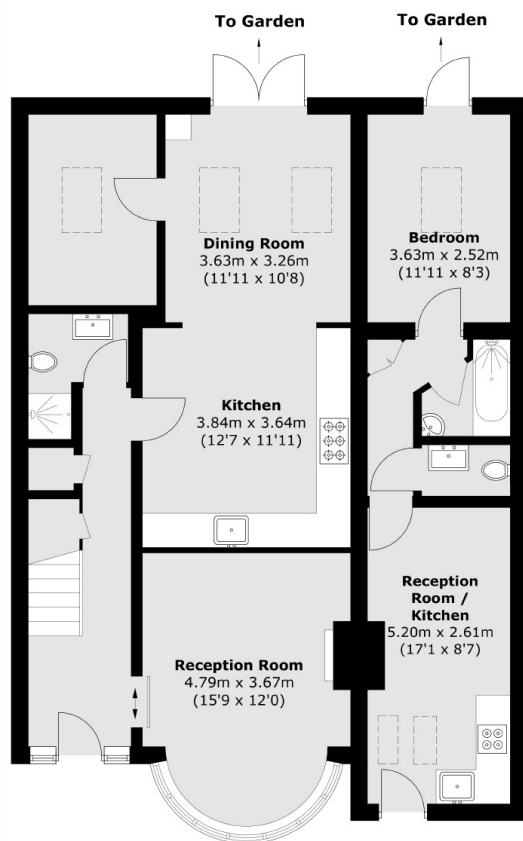
A fantastic opportunity to purchase this five bedroom semi-detached family home in excess of 1700 square feet. This well-presented property benefits from a large kitchen dining area, off-street parking and versatile downstairs living space.

Barford Close is located close to the exclusive Laboratory Health Club and Spa and Sunny Hill Park, and is within easy access of Colindale and Hendon Central Underground Stations.

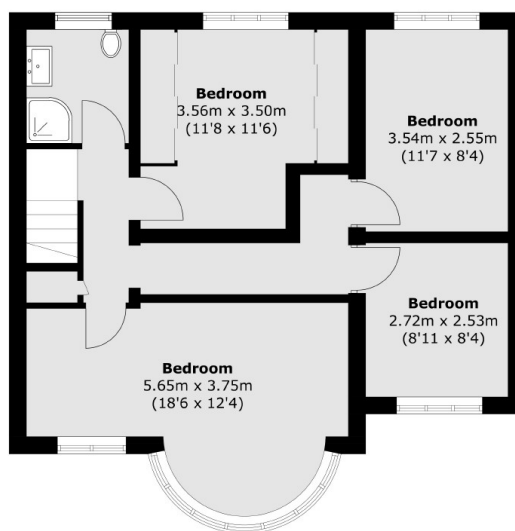
Features

- South Facing Garden
- Open Plan Living
- Off Street Parking
- Five Bedrooms
- Kitchen/Diner
- Fantastic Condition

Barford Close, London, NW4



Ground Floor



First Floor

Total area (approx.): 127.8 sq. m (1375.5 sq. ft)
Annex area (approx.): 30.5 sq. m (328.3 sq. ft)