



Rundell Crescent, NW4

£1,000,000

A fabulous five bedroom detached family home in the heart of Hendon. This excellent property has a large driveway, three bathrooms, a spacious garden and is in great condition throughout.

Rundell Crescent is one of Hendon's premier roads, located very close to Hendon Central Underground Station and within easy access of Hendon Mainline Station and Brent Cross Shopping Centre.

Features

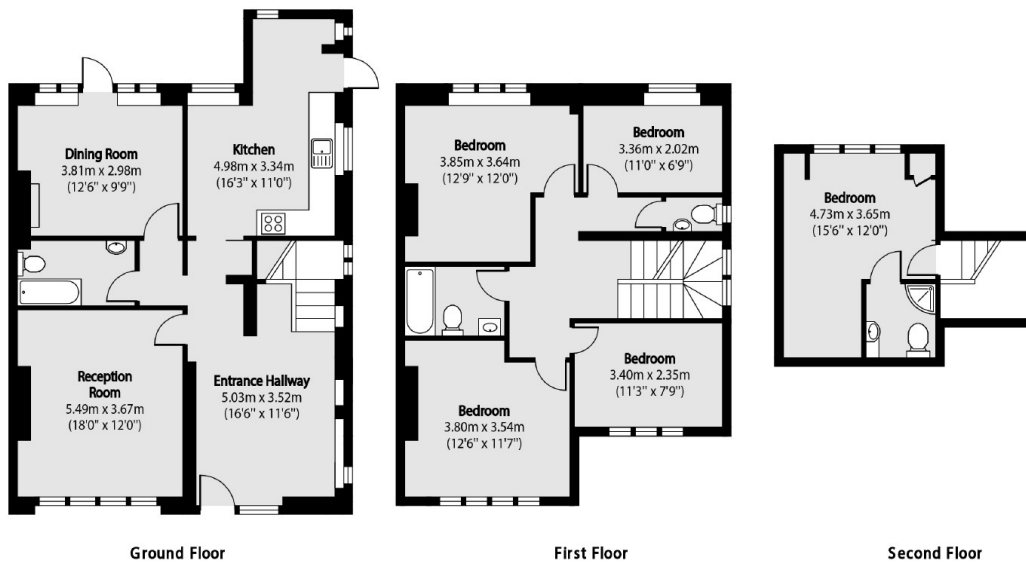
- Detached
- No Chain
- Five Double Bedrooms
- Large Driveway
- Spacious Garden
- Great Condition



Rundell Crescent, NW4



Rundell Crescent, London, NW4



Total area (approx): 150.86 sq m (1623 sq. ft)