



Rundell Crescent, NW4

£1,100,000

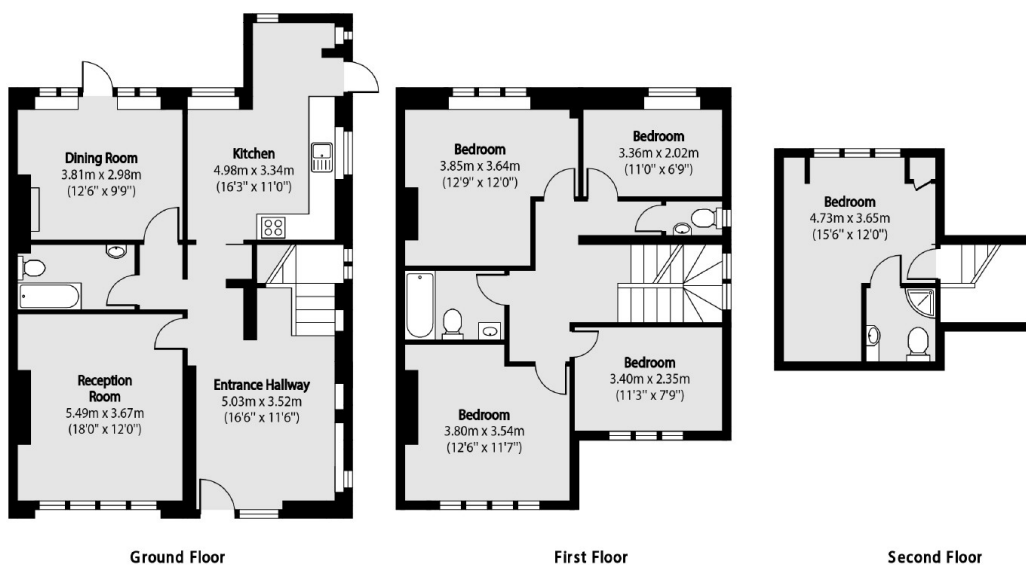
A fabulous five bedroom detached family home in the heart of Hendon. This excellent property has a large driveway, three bathrooms, spacious garden and is great condition throughout.

Rundell Crescent is one of Hendon's premier roads, located very close to Hendon Central Underground Station and within easy access of Hendon Mainline Station and Brent Cross Shopping Centre.

Features

- Detached
- No Chain
- Five Double Bedrooms
- Large Driveway
- Spacious Garden
- Great Condition

Rundell Crescent, London, NW4



Total area (approx): 150.86 sq m (1623 sq. ft)