



Wilshaw Close, NW4

£300,000

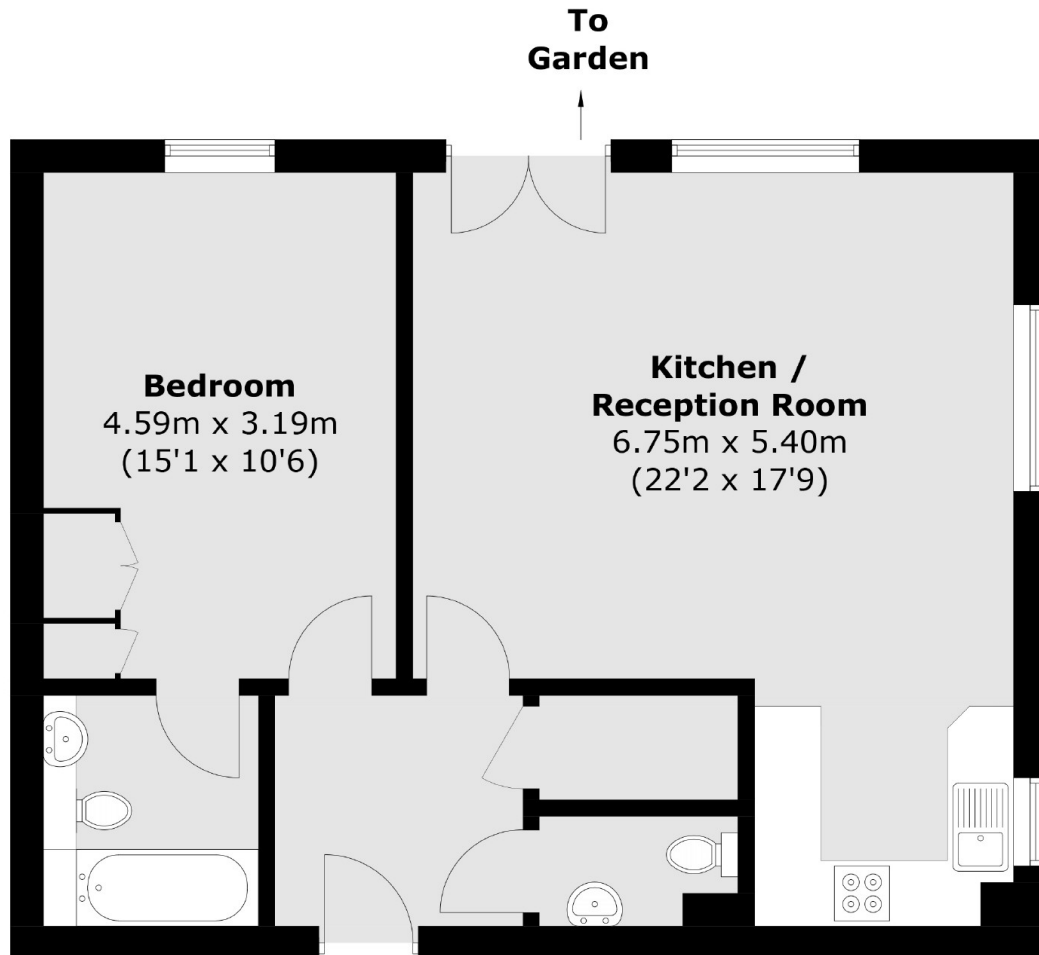
A very spacious one bedroom flat set on the ground floor of this handsome block. This is a perfect investment or first time buy and comes with a parking space and direct access to communal gardens.

The property is within easy reach of Hendon, Mill Hill and Finchley and excellent access to the M1, A41, A1 and the A406 and is nearby Middlesex University.

Features

- One Bedroom
- Parking
- Direct Access to Gardens
- Spacious
- Bright and Airy
- Bathroom

Wilshaw Close,
London, NW4



Total area (approx.): 60.6 sq. m (652.3 sq. ft)