



Wilshaw Close, NW4

£300,000

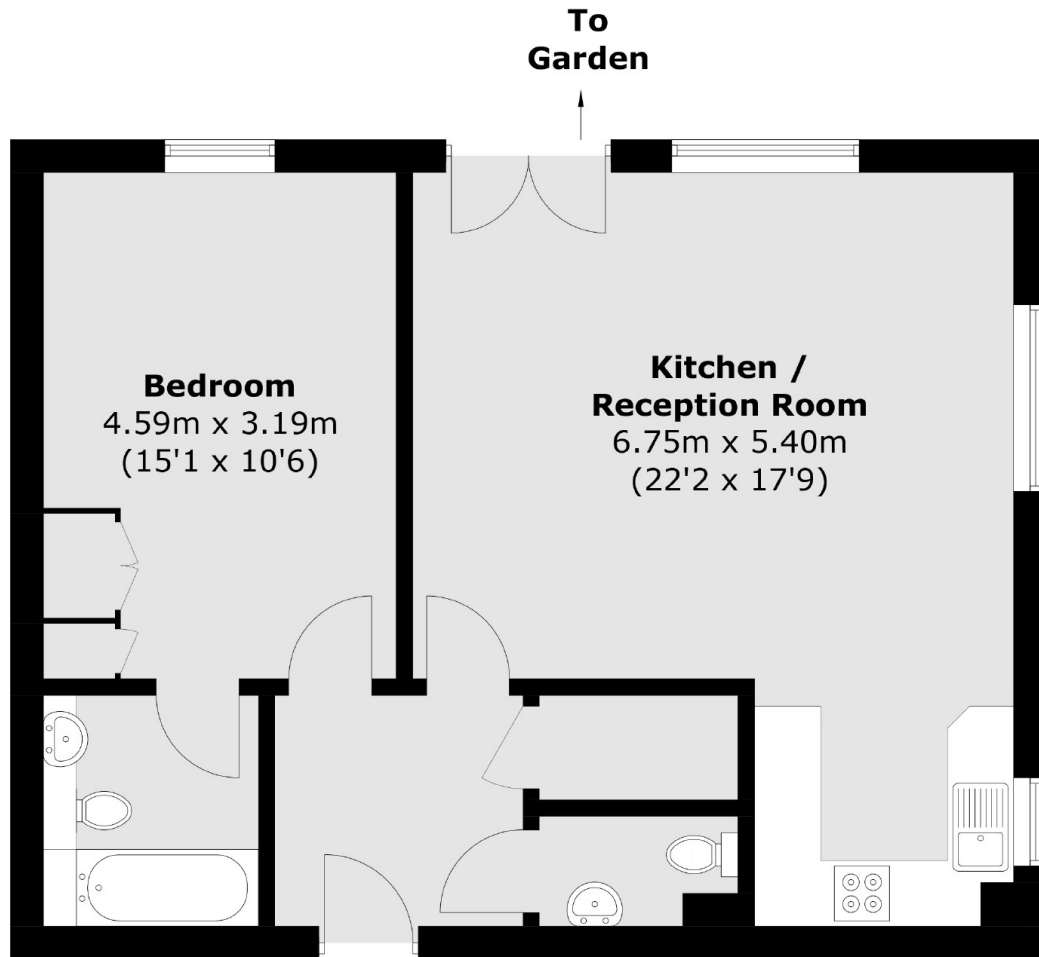
A very spacious one bedroom flat set on the ground floor of this handsome block. This is a perfect investment or first time buy and comes with a parking space and direct access to communal gardens.

The property is within easy reach of Hendon, Mill Hill and Finchley and excellent access to the M1, A41, A1 and the A406 and is nearby Middlesex University.

Features

- One Bedroom
- Parking
- Direct Access to Gardens
- Spacious
- Bright and Airy
- Bathroom

Wilshaw Close, London, NW4



Total area (approx.): 60.6 sq. m (652.3 sq. ft)

Dexters

Hendon
18 Central Circus
London
NW4 3AS
Sales
020 8545 8586

Energy Rating: C. We aim to make our particulars both accurate and reliable. However they are not guaranteed; nor do they form part of an offer or contract. If you require clarification on any points then please contact us, especially if you're traveling some distance to view. Please note that appliances and heating systems have not been tested and therefore no warranties can be given as to their good working order.

 **RICS** | Regulated
Estate Agent
and Letting Agent

dexters.co.uk