



Swynford Gardens, NW4 £240,000

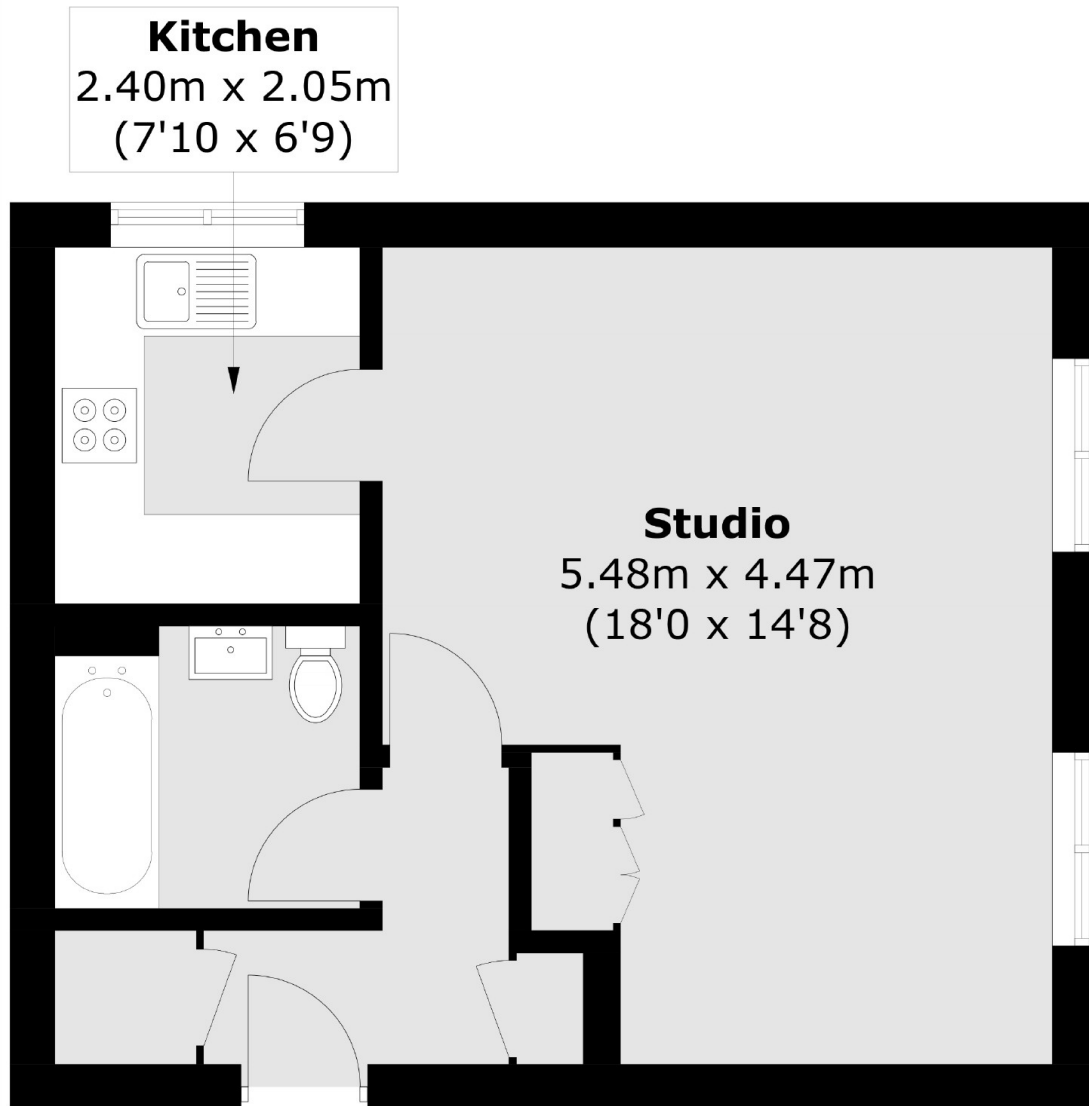
A charming Studio ground floor flat set within this modern development in Swynford Gardens. This home is perfect to put your stamp on, comes with private parking and no chain.

This popular development is conveniently located close to Middlesex University and within easy access of Hendon Central Underground Station.

Features

- Private Parking
- No Chain
- Studio
- In Need of Modernisation
- Ground Floor
- Quiet Development

Swynford Gardens, London, NW4



Total area (approx.): 37.0 sq. m (398.3 sq. ft)