



Silverworks Close, NW9

£2,000 Per calendar month

A contemporary new build apartment on the fourth floor (with lift access) of a luxury development. The property consists of a spacious open-plan reception room with modern fitted kitchen that includes integrated appliances, leading to a private balcony.

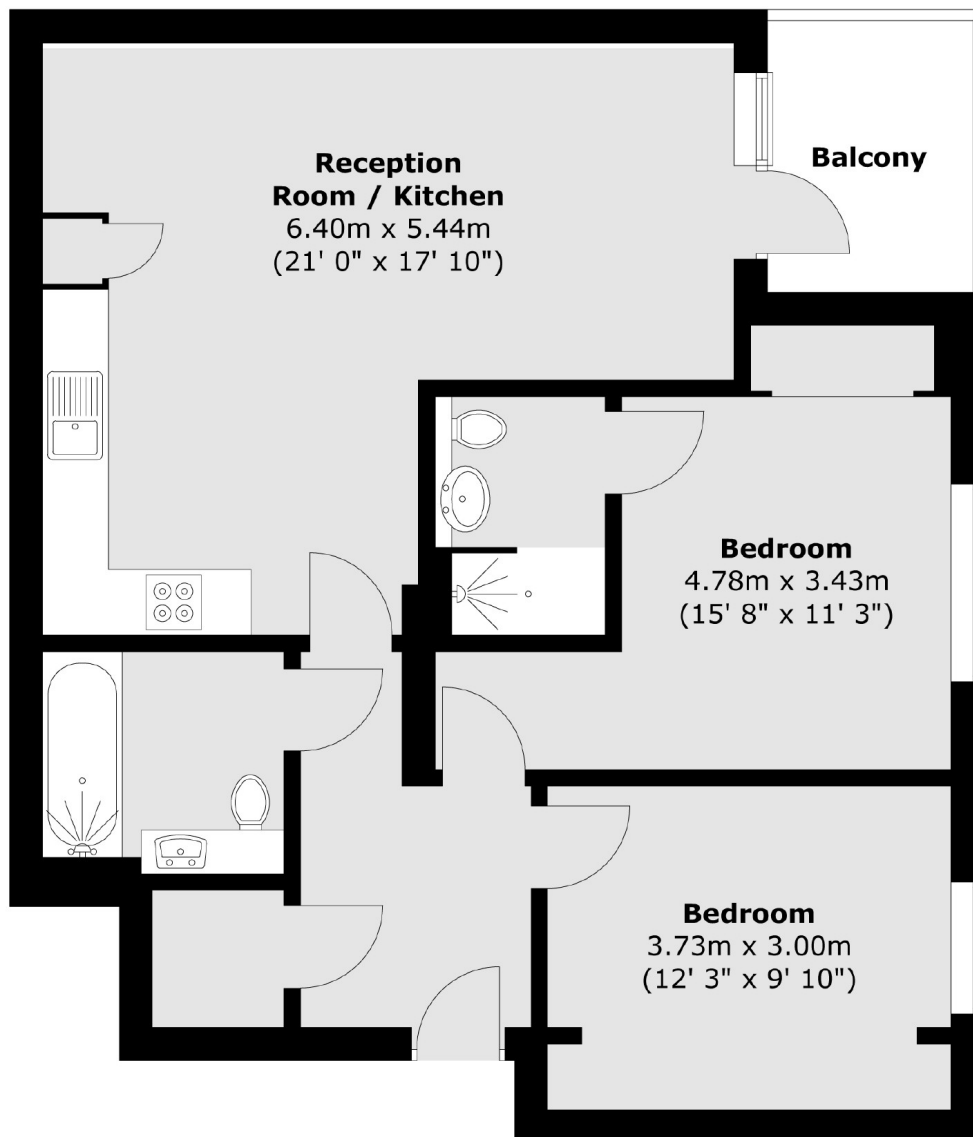
Located within easy reach of all amenities on Edgware Road (NW9), 0.6 miles to Colindale underground station, and a short distance to Hendon and Brent Cross

Features

- Modern Development
- Two Spacious Bedrooms
- Two Bathrooms
- Private Balcony
- Underground Parking
- Close to Local Amenities

Silverworks Close, London, NW9

Fourth Floor



Total area (approx.) : 73.1 sq. m (787 sq. ft)
Total balcony area (approx.) : 5.8 sq. m (62 sq. ft)