



## Meadow Drive, NW4

£1,100,000

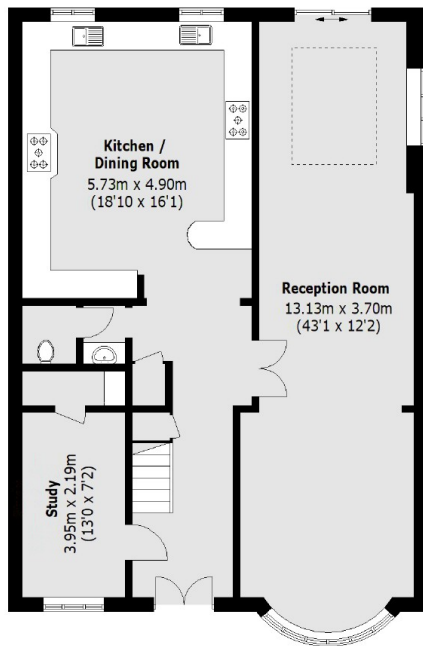
Newly refurbished five bedroom, semi detached family home, benefiting from large kitchen/diner, large through lounge, three bathrooms, study and ample off street parking.

Located in this quiet location close to Sunny Hill Park, and within access of Brent Street's shopping and transport facilities, and accessible for Hendon Central Underground Station

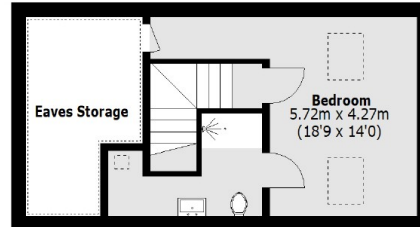
### Features

- Large Semi Detached House
- Large Kitchen Diner
- Five Bedrooms
- Three Bathrooms
- Guest WC
- Off Street Parking

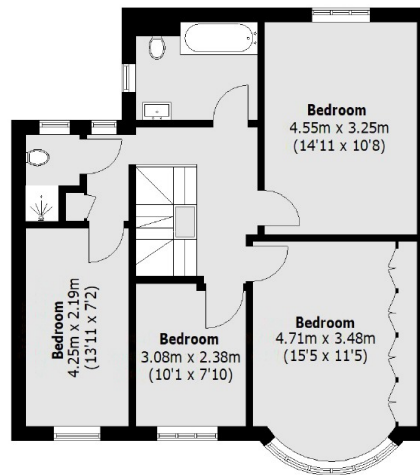
# Meadow Drive, Hendon, NW4



Ground Floor



Second Floor



First Floor

Total area (approx.): 197.5 sq.m (2,125.8 sq.ft)  
(Excluding Eaves Storage)